

Jõgeva maakond
Jõgeva vald
Näduvere liivamaardla

NÄDUVERE LIIVAKARJÄÄRI
(maavara kaevandamise luba nr L.MK/321914)
MARKŠEIDERIMÕÕDISTUS
Seisuga 13.04.2026
Töö nr 26-957

Tellija: osäühing Moreen
Kuuri
Võisiku küla
Põltsamaa vald
Jõgeva maakond
48029

Teostaja: Maavarauuringud OÜ
Liiva 41
Tartu linn
Tartu
50303

Vastutav täitja: Ranek Rohtla
/allkirjastatud digitaalselt/
geoloog ja diplomeeritud markšeider 6 tase
Tunnistus 189745

Tartu 2026

SISUKORD

1.	Sissejuhatus.....	3
2.	Mäeeraldise üldandmed ja geoloogiline iseloomustus.....	3
	2.1. Mäeeraldiste üldandmed.....	3
	2.2. Mäeeraldiste geoloogiline iseloomustus.....	9
3.	Markšeiderimõõdistus.....	9
4.	Kaevandatud maavara ja jääkvaru arvutus.....	10
	4.1. Kaevandatud maavara maht	10
	4.2. Jääkvaru maht	11
5.	Kokkuvõte.....	12
6.	Kasutatud materjalid.....	12

Tekstilisad

1.	Arvutiprogramm Surfer raport. Näduvere liivakarjääri mäeeraldiselt kaevandatud ehitusliiva maht plokist 1 ajavahemikul 12.09.2022–13.04.2026.....	13
2.	Arvutiprogramm Surfer raport. Näduvere mäeeraldise ladude maht kokku seisuga 13.04.2026.....	14
3.	Näduvere liivakarjääri väljavõte maardlate registrist seisuga 31.03.2026.....	15
4.	Maapinna kõrguspunktid seisuga 13.04.2026 (ainult CD-l; säästame loodust)	16

Graafilised lisad

1. Näduvere liivakarjääri markšeiderimõõdistuse plaan. Mõõtkava 1:1000
2. Näduvere liivakarjääri markšeiderimõõdistuse plaani läbilõige A–B

1. SISSEJUHATUS

Näduvere liivamaardla (nr 345) Näduvere liivakarjääri markšeiderimöödistamine tehti osaühing MOREEN tellimisel.

Markšeiderimöödistamise tegemisel on lähtutud majandus- ja taristuministri 10.05.2019. a määrusest nr 32 „Markšeiderimöödistuse täpsustatud nõuded ja kord” ja 01.01.2017. a kehtima hakanud Maapõueseaduse § 76.

Markšeiderimöödistamise välitööd on tehtud 13.04.2026. a.

Markšeiderimöödistuse aruande koostasid Maavarauuringud OÜ geoloog Ranek Rohtla ja diplomeeritud geoloogiainsener Ain Põldvere, möödistuse välitöö tegid Tiit Kalmus ja Ranek Rohtla. Markšeiderimöödistamise plaani koostamisel on kasutatud lisaks käesoleva möödistuse andmetele OÜ J.Viru Markšeideribüroo poolt koostatud Näduvere karjääri liiva jääkvaru arvutuse andmeid (EGF 6195) ja Maavarauuringud OÜ poolt koostatud Näduvere liivakarjääri markšeiderimöödistuse andmeid (seisuga 12.09.2022).

2. MÄEERALDISTE ÜLDANDMED JA GEOLOOGILINE ISELOOMUSTUS

2.1. Mäeeraldiste üldandmed

Näduvere liivakarjääri mäeeraldis (graafiline lisa 1) asub Näduvere liivamaardlal (nr 345) Jõgevamaal, Jõgeva vallas Näduvere küla maadel, Näduvere karjääri katastriüksusel (katastriüksuse tunnus 81003:001:1480, maa sihtotstarve on mäetööstusmaa 100%, pindala 8,77 ha). Kinnistu omanik on Eesti Vabariik, valitseja on Majandus- ja Kommunikatsiooniministeerium ning volitatud asutus Maa- ja Ruumiamet. Näduvere liivakarjääri mäeeraldise pindala on 8,42 ha ning mäeeraldise teenindusmaa pindala on 8,77 ha. Kaeveluba nr L.MK/321914 kehtib ajavahemikul 19.11.2020–11.06.2027. Kaeveluba kuulub osaühingule Moreen.

2018. aastal tegi OÜ J.Viru Markšeideribüroo Näduvere liivakarjääri mäeeraldise markšeiderimöödistuse ja arvutas kaevandatud maavaravaru mahu seisuga 23.07.2018. a. Nimetatud töö tulemused (sh varasem kõrgusandmestik) esitati EH2000 kõrgussüsteemis. Töö tulemusena hinnati Näduvere liivakarjääri jääkvaru mahuks ehitusliiva aktiivse tarbevaru 1. plokis kokku 600,84 tuh m³, millest kaevandatav 420,84 tuh m³. Sama töö tulemusena arvutati ehitusliiva aktiivse tarbevaru 7. ploki mahuks (asub ehitusliiva aktiivse tarbevaru 1. ploki lamamis) 295 tuh m³. Näduvere maardla ehitusliiva aktiivse tarbevaru 1. ploki lamamiseks on arvutuste kohaselt võetud 79,19 m absoluutkõrgus ning 7. ploki lamamiseks on 74,69 m absoluutkõrgus. Maa-amet kinnitas 21. septembril 2018 oma käskkirjaga nr 1-1/18/1914 vastavalt OÜ J.Viru Markšeideribüroo poolt tehtud jääkvaru arvutustele ehitusliiva aktiivse tarbevaru 1. ploki mahu 600,84 tuh m³ ja ehitusliiva aktiivse tarbevaru 7. ploki mahuks 295 tuh m³. Ehitusliiva aktiivse tarbevaru 1. plokk jääb põhjaveetasemest kõrgemale ning 7. plokk nii põhjaveetasemest kõrgemale kui ka madalamale.

Ehitusliiva aktiivse tarbevaru 7. plokki lamamist (absoluutkõrgusest 74,69 m) madalamale jääb passiivse tarbevaru 2 plokk (asub samades piirides ehitusliiva aktiivse tarbevaru 1. ja 7. plokiga), mille maht on 273 tuh m³.

Kaevandamisloa saamisel (seisuga 19.11.2020) oli mäeeraldis ehitusliiva aktiivse tarbevaru 1. plokki jääkvaru maht 600,840 tuh. m³, millest kaevandatav jääkvaru 420,840 tuh. m³. Mäeeraldis hõlmas ainult ehitusliiva aktiivse tarbevaru 1. plokki. Kaevandamisloa järgi on katendi (mulla) kogus 13,200 tuh. m³, mis on koorimata.

Markšeiderimõõdistuse andmetel (seisuga 12.09.2022) oli ehitusliiva aktiivse tarbevaru 1. plokki jääkvaru maht 569,5690 tuh. m³, millest kaevandatav jääkvaru 389,5690 tuh. m³.

Kaevandaja poolt deklareeritud mahtude alusel (seisuga 31.03.2026; lisa 3) oli mäeeraldis ehitusliiva aktiivse tarbevaru 1. plokki jääkvaru maht 561,069 tuh. m³, millest kaevandatav jääkvaru 381,069 tuh. m³.

Peale varu väljamist korrastatakse karjääri ala metsamaaks.

Näduvere liivakarjääri mäeeraldis piirneb läänest passiivse tarbevaru 3. plokiga, mille jääkvaru pindalal 0,09 ha on 13 tuh. m³. Passiivse tarbevaru 3. plokil asub geodeetiline märk Näduvere 326, mille kaitsevöönd märgi tsentrist on 3 m.

Näduvere liivakarjääri mäeeraldis piirneb põhja poolt ehitusliiva aktiivse tarbevaru plokiga 5 (aT), kus asub Teeääre liivakarjääri mäeeraldis ning lõuna poolt ehitusliiva aktiivse reservvaru plokiga 4 (aR). Ehitusliiva aktiivse tarbevaru 5. plokki pindala on 5,97 ha ja jääkvaru seisuga 31.03.2026. a (Maa- ja Ruumiameti kaardirakendus) on 434,350 tuh. m³. Ehitusliiva aktiivse reservvaru 4. plokki pindala on 12,06 ha ja jääkvaru seisuga 31.03.2026. a ((Maa- ja Ruumiameti kaardirakendus) on 1664 tuh. m³.

Näduvere liivakarjääri mäeeraldisest ning mäeeraldisest teenindusmaast lääne, loode ja põhja poole jääb Teeääre katastriüksus (katastriüksuse tunnus 81003:001:0172, maa sihtotstarve on mäetööstusmaa 55% ja maatulundusmaa 45%, pindala 12,70 ha), kus asub Teeääre liivakarjäär, kus maavara kaevandamise loa KL-516569 alusel kaevandab osahing Moreen (kaevandamisluba kehtib 29.08.2022-29.08.2037). Näduvere liivakarjäärist kirdesse jääb Voorekiilu katastriüksus (katastriüksuse tunnus 81003:001:0282, maa sihtotstarve on maatulundusmaa 100%, pindala 2,13 ha). Idast kagust ja lõunast piirneb Näduvere liivakarjäär Tõnutuka katastriüksusega (katastriüksuse tunnus 81003:001:0283, maa sihtotstarve on maatulundusmaa 100 %, pindala 3,93 ha).

Näduvere liivakarjääri mäeeraldisest ja mäeeraldisest teenindusmaa äärmises põhja-kirdenurgas on 2 m² ulatuses kattumine Söödi maaparandussüsteemiga (VID kood 2105560010080). Maavara kaevandamine Näduvere liivakarjääris on kooskõlastatud Põllumajandusameti Jõgeva keskusega.

Lähimad hooned asuvad ca 145 m kaugusel teisel pool Ulvi-Lilastvere-Torma riigi kõrvalmaanteed katastriüksusel Tõnu (registriosa nr 441235, katastritunnus 81003:001:0700).

Mäeeraldisel ei asu looduskaitsealasid ega kaitsealuseid üksikobjekte. Mäeeraldise maa-alale ei jää hooneid, kommunikatsioone ega muid tehnovõrke. Ülevaade mäeeraldise seisundist on esitatud fotodel 1–8 (seisuga 2026 aprill; fotod teinud Ranek Rohtla).

Näduvere mäeeraldise keskosa geograafilised koordinaadid on: 58°50'19''p1 ja 26°42'40'' ip (Eesti baaskaart, lehed 6421 ja 6423).



Foto 1. Näduvere karjääri kesk-lääne-lõunaosa kaeveala vaatega lääne suunas.



Foto 2. Näduvere karjääri kesk-lõuna-idaosa kaeveala vaatega kagu suunas.



Foto 3. Näduvere karjääri kesk-ida-kirdeosa kaeveala vaatega kirde suunas.



Foto 4. Näduvere karjääri kesk-põhja-loodeosa kaeveala vaatega põhja suunas.



Foto 5. Näduvere karjääri kesk-põhja-loodeosa kaeveala vaatega loode suunas.



Foto 6. Näduvere karjääri kesk-lääne-loodeosa kaeveala vaatega lääne suunas.



Foto 7. Näduvere karjääri kesk-ida-põhjaosa kaeveala vaatega kirde suunas.



Foto 8. Näduvere karjääri kesk-põhja-ida-lääneosa kaeveala vaatega loode suunas.

2.2. Mäeeraldiste geoloogiline iseloomustus

Näduvere liivamaardla varu, mis jääb Näduvere liivakarjääri mäeeraldise piiridesse, on kinnitatud 2018. a Näduvere liivakarjääri markšeiderimõõdistuse põhjal (OÜ J.Viru Markšeideribüroo, 2018).

Näduvere liivakarjääri mäeeraldise kattekihi moodustab kasvukiht (muld) ja saviliivmoreen (gIIIjr). Kasvukihi (mulla) paksus on 0,0-0,6 m, keskmiselt 0,4 m. Saviliivmoreen (gIIIjr) esineb samuti karjääri äärealadel, karjääri äärmises kirde-, kagu- ja lääneosas (Pa-4 ja Pa-7) paksusega 0,0-6,3 m, keskmine paksus 3,8 m. Kattekiht puudub karjääri põhja- ning keskosas, kust see on eelnevate kaevetööde käigus eemaldatud. Kattekiht esineb karjääri äärmises kirde-, ida-, kagu-, lõuna-, edela-, lääne- ja loodeosas. Kattekihi (mulla ja saviliivmoreeni) paksus J.Viru Markšeideribüroo 1999.a määrangu alusel on keskmiselt 4,1 m sealhulgas kasvukihi paksus 0,4 m. Seisuga 23.07.2018.a paikneb katendit hinnanguliselt 25000 m² suurusel alal seega katendi maht 102,5 tuh m³, sh kasvukiht 10,0 tuh m³.

Näduvere liivakarjääri kasuliku kihi moodustab glatsiofluviaalne liiv ja liiv kruusaga (fIIIjr) paksusega 11,2 (Pa-7)–20,8 (Pa-8) m, keskmine paksus on 14,2 m. Kasuliku kihi lamam on läbitud karjääri mäeeraldisel kolmes puuraugus (Pa-5, Pa-6 ja Pa-12). Kasuliku kihi lamami moodustab saviliivmoreen (gIIIjr). Lamam on läbitud 1,8-3,0+ m ulatuses.

J.Viru Markšeideribüroo poolt Näduvere karjääri jääkvaru arvutuse aruandes “Näduvere karjääri liiva jääkvaru arvutus” on kasutatud Näduvere karjääri põhjas 1999. aastal mõõdetud veetaset, mis asus suhtelisel kõrgusel 77,91 (EH2000 kõrgussüsteemis) m (veetaseme absoluutne kõrgus on 78,91 m). Varu arvutamisel oli aluseks 1999. aastal Näduvere karjääri piires stabiliseerunud veetase 77,19 m (Näduvere liivakarjääri põhjavee tase asub absoluutsel kõrgusel 78,19 m (EH2000 kõrgussüsteemis)). Näduvere liivakarjääri mäeeraldisel kaevandtakse ainult ülalpool põhjavee taset asuvat varu. Näduvere liivakarjäärist põhja pool asuval Teeääre liivakarjääris mõõdeti seisuga 13.04.2026 veetasemeks väikses veekogus 77,37 m absoluutkõrgus. Näduvere liivakarjääri territooriumil oli seisuga 13.04.2026 kogu ala kuiv ehk veesilmad puudusid.

Näduvere liivakarjääri mäeeraldis asub Näduvere liivamaardla ehitusliiva aktiivse tarbevaru 1. plokil. Näduvere liivakarjääri mäeeraldise liiv vastab keskmiste näitajate põhjal ehitusliiva nõuetele. Kruusa (osakesed läbimõõduga üle 5 mm) sisaldus on 0,5-25,4%, keskmiselt 6,2%. Liiv on ülipeene- kuni keskmiseteraline, valdavalt väga peeneteraline (peensusmoodul 0,8-2,3), savi- ja tolmuosakeste (osakesed läbimõõduga alla 0,05 mm) sisaldus on 2,6-16,5%, keskmiselt

3. MARKŠEIDERIMÕÕDISTUS

Topogeodeetilise mõõdistamise välitööd on tehtud 2026. aasta 13. aprillil GPS RTK liikuvjaama Spectra SP100 abil, mille mõõdistamise plaaniline täpsus on horisontaalselt koordinaatide määramisel ±5mm + 0,5ppm, kõrguslikult ±10mm + 1ppm. GPS tööjaama lubatud maksimaalne vahemaa püsijaamast on tehniliste tingimuste järgi 35 km. Töö on

teostatud L'EST 97 koordinaatide süsteemis, kõrgused on arvatud EH2000 süsteemis. Koordinaadid on seotud riikliku geodeetilise põhivõrguga GPS püsijaamade võrgu GeoNet vahendusel. Nimetatud püsivõrgu haldaja on Geosoft OÜ. Mõõdistamisel kasutati Spectra SP85 liikuvjaama komplektis väliarvutit MobileMapper6. Liikuvjaam on enne ja pärast mõõdistust kontrollitud riiklikul tihendusvõrgu punktil PEETSU97 (ID 56908; X=6525806,371, Y=662805,299, Z=57,351(EH2000)). GNSS vastuvõtuseadmega mõõdetud geodeetilise punkti koordinaadid olid enne mõõdistamise alustamist: X=6525806,370 (erinevus 0,001); Y=662805,294 (erinevus 0,005); Z=57,339 (erinevus 0,012) ja peale mõõdistamise lõpetamist: X=6525806,371 (erinevus 0,000); Y=662805,296 (erinevus 0,003); Z=57,340 (erinevus 0,011). Geodeetilise punkti mõõtmistulemuste erinevus geodeetiliste punktide andmekogus esitatud koordinaatidest vastab seadme tehnilises spetsifikatsioonis toodud täpsusandmetele ning jääb maapõueseaduses toodud lubatud erinevuste piiridesse (*Vastavalt 10.05.2019. a määrusele nr 32 „Markšeiderimõõdistuse täpsustatud nõuded ja kord” §1 (4) ei või GNSS-i vastuvõtuseadmega mõõdetud koordinaatide erinevus geodeetiliste punktide andmekogus esitatud koordinaatidest kontrollmõõtmisel ületada horisontaalselt 3 cm ($\Delta H < 0,030$ m) ja kõrguslikult 7 cm ($\Delta V < 0,070$ m)*). Plaani koostamisel on kasutatud programmi MapInfo.

Nii eelnev kui ka praegune markšeiderimõõdistus on tehtud Euroopa (EH2000) kõrgussüsteemis.

4. KAEVANDATUD MAAVARA JA JÄÄKVARU ARVUTUS

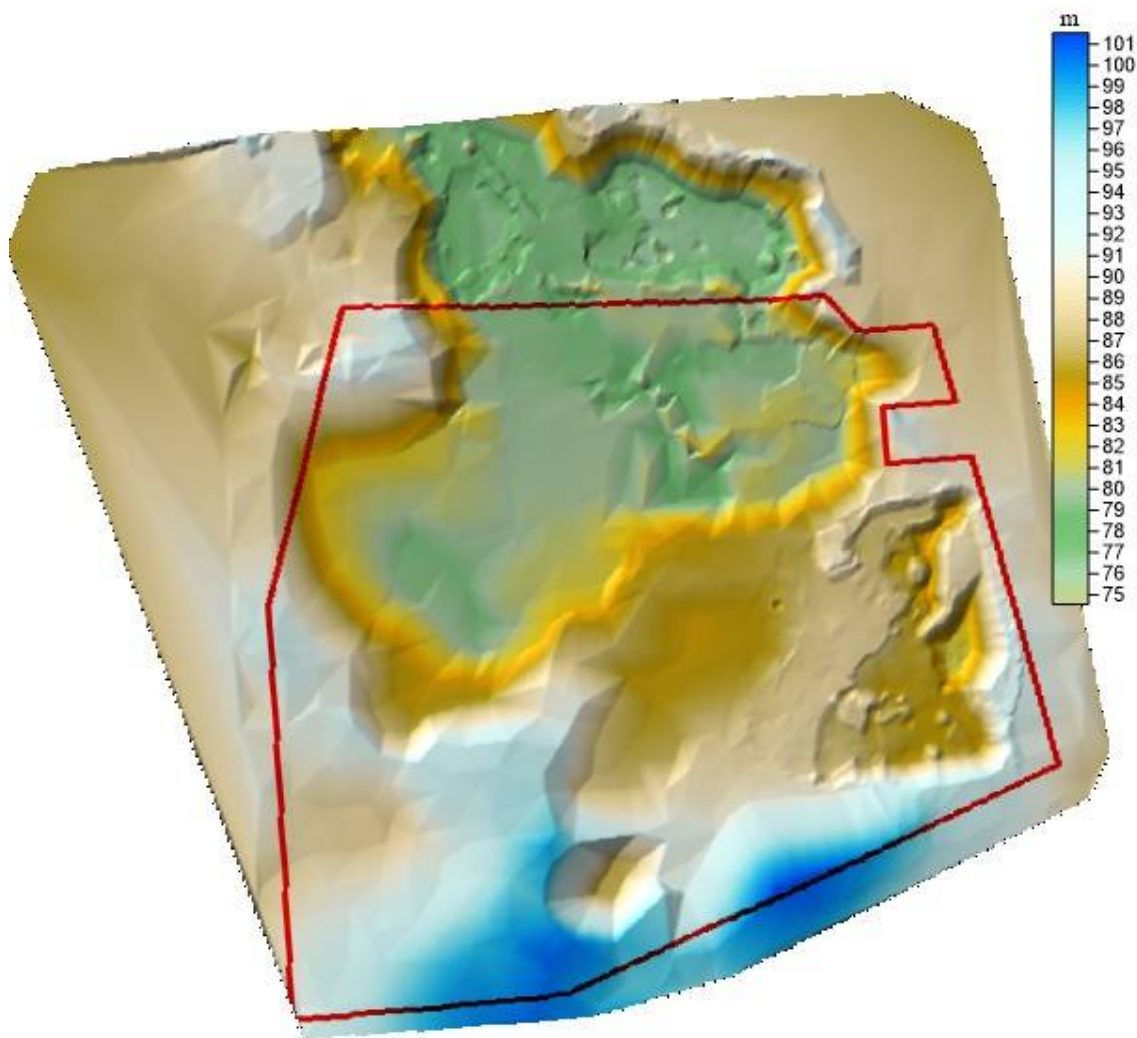
4.1. Kaevandatud maavara maht

Alates viimasest markšeiderimõõdistusest (seisuga 12.09.2022) on seisuga 13.04.2026. a määraldisel kaevandatud 0,73 hektaril. Kaevandatud on varasemalt kooritud alalt. Kaevandatud on aktiivse tarbevaru ehitusliiva 1. plokist (põhjaveetasemest kõrgemalt). Joonisel 1 on esitatud 2026. a maapinna reljeefimudel.

Kaevandatud mahtude väljaselgitamiseks toimiti järgmiselt. **Kaevandatud maavara mahu** arvutused tehti arvutiprogrammiga Surfer 10 (Triangulation with Linear Interpolation meetodil) määraldisel 12.09.2022. a markšeiderimõõdistuse ajal (Maavarauuringud OÜ) mõõdistatud maapinna mudeli ja 13.04.2026. a mõõdistatud maapinna mudeli vahelises ruumis. Ladude maht arvutati samuti arvutiprogrammiga Surfer 10 (Triangulation with Linear Interpolation meetodil).

Kahe markšeiderimõõdistuse vahelisel perioodil, **ajavahemikul 12.09.2022–13.04.2026 on määraldiselt kaevandatud ehitusliiva aktiivse tarbevaru 1. plokist 13,978 tuh. m³ (lisa 1) ehitusliiva**. Kaevandatud on juba varasemalt kooritud alalt.

Seisuga 13.04.2026 on Näduvere määraldisel ladudes kokku 0,068 tuh. m³ (lisa 2) materjali. Laopuistangute maht on arvestatud kaevandatud mahu hulka.



Joonis 1. Nädvere liivakarjääri mäeeraldise (piiritletud punase joonega) ja lähiümbruse reljeef seisuga 13.04.2026. a.

4.2. Jääkvaru maht

Markšeiderimõõdistuse andmetel (seisuga 12.09.2022) oli ehitusliiva aktiivse tarbevaru 1. ploki jääkvaru maht 569,5690 tuh. m³, millest kaevandatav jääkvaru 389,5690 tuh. m³.

Markšeiderimõõdistuse andmetel (seisuga 13.04.2026) oli ehitusliiva aktiivse tarbevaru 1. ploki jääkvaru maht 555,5910 tuh. m³, millest kaevandatav jääkvaru 375,5910 tuh. m³.

Kaevandaja poolt deklareeritud mahtude alusel (seisuga 31.03.2026; *lisa 3*) oli mäeeraldise ehitusliiva aktiivse tarbevaru 1. ploki jääkvaru maht 561,069 tuh. m³, millest kaevandatav jääkvaru 381,069 tuh. m³.

Tabelis 1 on esitatud kokkuvõtvalt käesolevas töös arvatud jääkvaru koguse ja Nädvere liivakarjääri mäeeraldise bilansilise (mäeeraldise detailandmetel seisuga 31.03.2026; *lisa 3*) koguse võrdlus.

Tabel 1

Plokk, maavara	Jääkvaru seisuga 12.09.2022, tuh. m ³	Kaevandatud maht MS alusel ajavahemikul 12.09.2022- 13.04.2026, tuh. m ³	Jääkvaru seisuga 13.04.2026, tuh. m ³	Bilansiline jääkvaru seisuga 31.03.2026, tuh. m ³	Tegelik ja bilansilise jääkvaru vahe, tuh. m ³
1 – ehitusliiv	569,5690	13,9780	555,5910	561,0690	+5,4780
KOKKU	569,5690	13,9780	555,5910	561,0690	+5,4780

+ märgiga juurde deklareeritav kogus

5. KOKKUVÕTE

Alates viimasest markseiderimõõdistusest (seisuga 12.09.2022) on seisuga 13.04.2026. a määraldisel kaevandatud 0,73 hektarilt ehitusliiva aktiivse tarbevaru 1. plokist 13,9780 tuh. m³ ehitusliiva. Pindalaliselt ja sügavuti pole määraldisest üle kaevandamist toimunud.

Kaevandamisega rikutud ala (kaevandamine, katendi koorimine, katendi ladustamine) kogupindala on koos Teeääre määraldisega 9,88 ha. Kasutatud ega kasutuskõlbmatuks muudetud maavaravaru koguseid määraldisel ei ole.

6. KASUTATUD MATERJALID

Maapõueseadus (vastu võetud 27.10.2016) § 76 (Markseiderimõõdistus).

Majandus- ja taristuministri määrus nr 32 „Markseiderimõõdistuse täpsustatud nõuded ja kord” (RT I, 07.05.2019, 5).

Maavarauuringud OÜ. Näduvere liivakarjääri markseiderimõõdistus seisuga 12.09.2022.

Näduvere liivakarjääri kaevandamise luba nr L.MK/321914.

Näduvere maardla registrikaart nr 345.

OÜ J.Viru Markseideribüroo. Näduvere liivakarjääri markseiderimõõdistus seisuga 23.07.2018.a.

OÜ J.Viru Markseideribüroo. Näduvere karjääri liiva jääkvaru arvutus. EGF 6195.

Lisa 1

Arvutiprogramm Surfer raport. Näduvere liivakarjääri mäeeraldiselt kaevandatud ehitusliiva maht plokist 1 ajavahemikul 12.09.2022–13.04.2026.

Grid Volume Computations

Upper Surface

Grid File Name:	I:\LEPINGUD III\NÄDUVERE MS 2026 MOREEN\SURFER 2026\out2022.grd
Grid Size:	400 rows x 467 columns
X Minimum:	656250.43
X Maximum:	656716.23
X Spacing:	0.99957081545049
Y Minimum:	6525120.43
Y Maximum:	6525519.46
Y Spacing:	1.0000751879706
Z Minimum:	77.523049811311
Z Maximum:	101.52767094902

Lower Surface

Grid File Name:	I:\LEPINGUD III\NÄDUVERE MS 2026 MOREEN\SURFER 2026\out2026.grd
Grid Size:	400 rows x 467 columns
X Minimum:	656250.5
X Maximum:	656716.23
X Spacing:	0.99942060085833
Y Minimum:	6525120.43
Y Maximum:	6525519.46
Y Spacing:	1.0000751879706
Z Minimum:	77.522799223764
Z Maximum:	101.52741907229

Volumes

Z Scale Factor:	1
-----------------	---

Total Volumes by:

Trapezoidal Rule:	12937.822409449
Simpson's Rule:	12947.464137836
Simpson's 3/8 Rule:	12941.294416243

Cut & Fill Volumes

Positive Volume [Cut]:	13977.783269404 ehk mäeeraldiselt kaevandatud maht on 13,978 tuh. m³.
Negative Volume [Fill]:	1039.9608599545
Net Volume [Cut-Fill]:	12937.822409449

Ajavahemikul 12.09.2022–13.04.2026 on mäeeraldiselt kaevandatud ehitusliiva aktiivse tarbevaru 1. plokist 13,978 tuh. m³ ehitusliiva. Kaevandatud on juba varasemalt kooritud alalt.

Arvutiprogramm Surfer raport. Näduvere mäeeraldise ladude maht kokku seisuga 13.04.2026.

Grid Volume Computations

Upper Surface

Grid File Name: I:\LEPINGUD III\NÄDUVERE MS 2026 MOREEN\SURFER 2026\TOPO 2026.grd
 Grid Size: 400 rows x 467 columns
 X Minimum: 656250.503
 X Maximum: 656716.231
 X Spacing: 0.99941630901288
 Y Minimum: 6525120.428
 Y Maximum: 6525519.458
 Y Spacing: 1.0000751879682
 Z Minimum: 74.570753899304
 Z Maximum: 101.52717808671

Lower Surface

Grid File Name: I:\LEPINGUD III\NÄDUVERE MS 2026 MOREEN\SURFER 2026\TOPO 2026 lad.grd
 Grid Size: 400 rows x 467 columns
 X Minimum: 656250.5
 X Maximum: 656716.23
 X Spacing: 0.99942060085833
 Y Minimum: 6525120.43
 Y Maximum: 6525519.46
 Y Spacing: 1.0000751879706
 Z Minimum: 74.571570001088
 Z Maximum: 101.52741907229

Volumes

Z Scale Factor: 1

Total Volumes by:

Trapezoidal Rule: -14.82400575758
 Simpson's Rule: -14.858517773757
 Simpson's 3/8 Rule: -14.839818721063

Cut & Fill Volumes

Positive Volume [Cut]: 68.455780839072 ehk laopuistangu maht kokku on 0,068 tuh. m³
 Negative Volume [Fill]: 83.279786596652
 Net Volume [Cut-Fill]: -14.824005757581

Mäeeraldise detailandmed

Kood 1070

Nimetus Näduvere liivakarjäär

Maardla 345 - Näduvere

Seisund aktiivne

Asukoht Jõgeva maakond Jõgeva vald

Kaevandamisloa number L.MK/321914

Kaevandamisloa kehtivus 19.11.2020 - 11.06.2027

Kaevandamisloa omaja OÜ MOREEN

Maavara kasutamise eesmärk teedehitus, ehitustööd

Korrastamissuund maatulundusmaa (metsamaa)

Mäeeraldise varu loa vormil ehitusliiv aT 600,84 tuh m3

Kasutusala	Max kogus aastas	Kaevandatav varu loa vormil
ehitusliiv	-	420.84

Plokid

Registrikaart	Ploki nimi	Kasutusala	Uuringuviis	Ploki liik	Jääkvaru kogus
345	1 plokk	ehitusliiv	2005. a määrus nr 44	aT	561.069

Lisa 4. Nädure liivakarjääri mõõdistuspunktid seisuga 13.04.2026

1	6525518,962	656428,751	79,070	53	6525517,141	656373,307	90,490
2	6525516,810	656422,461	80,230	54	6525513,500	656373,141	90,430
3	6525518,134	656419,648	80,490	55	6525510,356	656370,990	90,630
4	6525517,969	656413,855	81,940	56	6525510,687	656367,514	90,830
5	6525518,962	656413,359	81,240	57	6525513,500	656366,852	91,260
6	6525515,817	656411,869	82,000	58	6525516,148	656368,342	91,320
7	6525514,162	656408,559	82,770	59	6525516,810	656369,997	91,030
8	6525513,831	656406,573	83,170	60	6525515,321	656369,997	92,110
9	6525512,673	656405,083	83,540	61	6525513,997	656370,328	92,210
10	6525513,004	656401,939	84,750	62	6525513,335	656369,666	92,320
11	6525512,011	656399,456	85,050	63	6525513,666	656369,004	92,280
12	6525513,500	656399,125	85,100	64	6525517,307	656460,693	78,950
13	6525515,817	656399,125	84,740	65	6525518,631	656459,203	78,700
14	6525518,631	656399,456	83,900	66	6525517,141	656457,714	78,800
15	6525516,479	656400,284	85,200	67	6525517,472	656457,052	78,470
16	6525517,803	656402,104	85,190	68	6525519,458	656453,742	79,060
17	6525518,796	656404,421	84,810	69	6525515,321	656448,942	78,900
18	6525518,465	656409,221	84,300	70	6525514,659	656444,473	78,740
19	6525517,472	656406,077	84,820	71	6525514,990	656441,494	78,740
20	6525517,307	656405,911	84,800	72	6525516,314	656435,371	78,660
21	6525516,148	656403,263	85,320	73	6525515,321	656431,233	79,090
22	6525513,997	656401,442	84,930	74	6525513,335	656427,923	80,170
23	6525512,011	656406,573	82,900	75	6525510,687	656430,240	80,280
24	6525509,859	656409,056	82,610	76	6525507,377	656432,723	80,060
25	6525506,549	656409,387	82,800	77	6525510,687	656433,716	81,410
26	6525504,232	656407,235	83,750	78	6525511,183	656433,716	81,650
27	6525507,211	656407,566	81,600	79	6525511,349	656435,536	81,230
28	6525506,880	656404,090	81,650	80	6525512,011	656435,371	81,350
29	6525506,549	656402,932	81,720	81	6525512,507	656437,026	80,740
30	6525508,039	656402,104	81,850	82	6525512,838	656436,860	80,830
31	6525509,197	656402,932	81,620	83	6525511,183	656426,102	80,600
32	6525509,694	656405,414	81,640	84	6525508,039	656429,082	80,580
33	6525509,363	656406,077	81,640	85	6525505,225	656431,068	80,330
34	6525512,838	656417,496	81,150	86	6525502,908	656434,212	78,210
35	6525505,391	656414,352	82,310	87	6525504,398	656436,364	77,900
36	6525498,439	656411,042	83,970	88	6525507,377	656437,191	78,870
37	6525492,978	656408,890	85,140	89	6525506,715	656437,853	78,420
38	6525500,591	656403,594	85,800	90	6525506,549	656438,515	77,250
39	6525499,929	656401,608	86,310	91	6525503,570	656437,688	77,890
40	6525499,929	656398,463	88,330	92	6525503,736	656438,184	77,260
41	6525488,013	656406,573	85,970	93	6525504,067	656439,674	76,570
42	6525486,689	656404,256	86,410	94	6525502,081	656435,867	78,120
43	6525479,572	656399,787	87,460	95	6525501,419	656438,019	77,930
44	6525496,950	656393,333	91,570	96	6525502,081	656439,508	77,360
45	6525506,880	656392,671	90,920	97	6525503,239	656440,667	76,470
46	6525514,659	656391,512	90,350	98	6525499,433	656439,177	78,240
47	6525517,307	656390,188	90,510	99	6525500,426	656440,501	77,730
48	6525517,969	656384,230	90,420	100	6525499,764	656442,653	77,760
49	6525516,810	656380,423	90,290	101	6525501,750	656442,487	78,010
50	6525515,652	656376,617	90,260	102	6525502,081	656442,487	77,390
51	6525518,465	656374,631	89,780	103	6525503,901	656441,494	76,190
52	6525519,293	656370,990	90,550	104	6525498,770	656445,797	78,350

105 6525502,412 656444,804 78,320
 106 6525503,405 656444,142 78,080
 107 6525503,901 656443,480 77,370
 108 6525504,729 656442,156 76,520
 109 6525505,060 656445,135 78,710
 110 6525506,715 656443,646 77,860
 111 6525506,384 656443,315 77,420
 112 6525505,722 656441,825 76,260
 113 6525507,542 656442,322 77,790
 114 6525508,039 656440,667 77,680
 115 6525510,687 656441,163 77,700
 116 6525512,011 656441,163 77,760
 117 6525512,011 656442,984 77,830
 118 6525509,528 656443,977 77,900
 119 6525514,328 656444,142 78,890
 120 6525510,190 656446,294 78,840
 121 6525502,081 656455,231 78,990
 122 6525494,798 656460,196 77,790
 123 6525482,717 656453,907 77,021
 124 6525485,365 656446,294 79,280
 125 6525464,511 656462,348 76,460
 126 6525455,243 656437,191 79,820
 127 6525423,632 656459,534 79,540
 128 6525430,252 656466,982 79,200
 129 6525436,872 656462,182 79,360
 130 6525433,396 656456,721 79,310
 131 6525454,084 656441,494 78,062
 132 6525459,215 656441,660 78,071
 133 6525454,912 656449,935 77,076
 134 6525461,036 656449,770 77,059
 135 6525460,870 656455,893 77,075
 136 6525459,050 656461,851 76,410
 137 6525453,091 656464,996 77,030
 138 6525466,497 656456,390 77,078
 139 6525466,166 656450,763 77,081
 140 6525469,311 656447,784 77,154
 141 6525471,959 656461,851 76,460
 142 6525477,751 656448,280 77,140
 143 6525482,551 656450,266 77,110
 144 6525488,509 656451,756 77,170
 145 6525494,798 656454,238 77,500
 146 6525491,157 656454,900 77,048
 147 6525488,013 656459,038 76,400
 148 6525483,710 656461,355 76,560
 149 6525476,924 656456,390 77,039
 150 6525477,255 656461,355 76,370
 151 6525470,800 656457,052 77,072
 152 6525485,034 656469,630 79,300
 153 6525476,262 656469,134 76,360
 154 6525467,656 656477,740 79,210
 155 6525462,194 656483,863 78,930
 156 6525458,057 656492,304 78,860
 157 6525461,036 656502,234 79,200
 158 6525464,842 656506,537 79,170

159 6525467,987 656514,647 78,040
 160 6525465,504 656517,626 77,560
 161 6525463,518 656511,503 78,700
 162 6525460,208 656504,220 79,190
 163 6525452,760 656501,738 78,880
 164 6525447,133 656506,206 79,280
 165 6525442,665 656511,337 79,590
 166 6525440,182 656517,461 79,870
 167 6525439,189 656525,405 79,780
 168 6525438,196 656526,067 79,840
 169 6525438,031 656527,060 80,090
 170 6525436,210 656529,377 80,270
 171 6525433,396 656532,687 79,800
 172 6525431,245 656536,494 79,750
 173 6525431,245 656541,459 79,650
 174 6525431,907 656545,265 79,730
 175 6525432,072 656550,727 79,620
 176 6525432,072 656554,534 79,810
 177 6525433,562 656556,189 80,640
 178 6525434,224 656556,023 80,440
 179 6525435,217 656551,555 80,450
 180 6525436,541 656551,389 80,470
 181 6525436,706 656547,417 80,150
 182 6525435,382 656547,251 80,470
 183 6525433,727 656542,286 80,760
 184 6525434,389 656541,955 80,680
 185 6525434,886 656536,328 80,920
 186 6525434,720 656535,666 81,180
 187 6525437,369 656532,356 80,900
 188 6525437,203 656531,694 81,010
 189 6525437,865 656529,542 80,810
 190 6525437,534 656529,377 81,130
 191 6525427,935 656528,715 79,990
 192 6525427,769 656538,149 79,930
 193 6525427,438 656546,424 79,720
 194 6525426,280 656555,527 79,840
 195 6525431,410 656555,858 79,970
 196 6525428,928 656560,823 79,350
 197 6525426,114 656565,953 79,290
 198 6525425,783 656570,422 78,910
 199 6525426,611 656573,732 79,150
 200 6525428,762 656575,553 79,430
 201 6525430,417 656571,746 81,620
 202 6525430,086 656571,249 81,650
 203 6525432,900 656566,946 81,940
 204 6525432,569 656566,450 82,090
 205 6525434,555 656563,140 81,990
 206 6525434,224 656562,974 82,220
 207 6525433,727 656559,830 81,690
 208 6525433,231 656559,995 81,820
 209 6525431,079 656580,683 79,350
 210 6525426,776 656584,159 79,990
 211 6525430,252 656589,289 79,650
 212 6525434,720 656588,462 78,960

213 6525438,527 656592,269 79,490
 214 6525437,369 656594,586 79,720
 215 6525439,520 656598,392 79,560
 216 6525443,823 656598,723 79,400
 217 6525442,334 656593,924 79,540
 218 6525447,299 656592,103 78,680
 219 6525449,616 656594,751 78,710
 220 6525454,415 656592,103 77,860
 221 6525450,774 656589,289 77,690
 222 6525450,940 656587,469 77,050
 223 6525455,077 656586,972 76,310
 224 6525451,602 656584,159 76,140
 225 6525449,616 656587,469 76,870
 226 6525447,133 656590,282 77,470
 227 6525443,161 656591,441 78,300
 228 6525442,334 656591,275 78,500
 229 6525438,527 656589,455 77,630
 230 6525438,693 656589,124 77,760
 231 6525444,816 656587,965 80,100
 232 6525444,651 656587,469 80,180
 233 6525443,823 656587,138 80,210
 234 6525442,830 656587,965 80,260
 235 6525438,362 656588,296 77,140
 236 6525437,534 656585,483 76,390
 237 6525437,203 656584,821 76,460
 238 6525439,024 656583,497 76,240
 239 6525436,541 656581,676 76,910
 240 6525434,886 656577,208 76,990
 241 6525437,203 656574,891 77,050
 242 6525442,168 656581,511 76,580
 243 6525445,644 656581,676 76,550
 244 6525450,278 656584,655 76,140
 245 6525456,070 656586,476 76,220
 246 6525460,043 656585,814 76,310
 247 6525466,663 656582,173 76,590
 248 6525470,138 656574,725 76,940
 249 6525461,036 656571,415 76,210
 250 6525452,926 656570,091 76,430
 251 6525444,154 656570,587 76,800
 252 6525445,644 656564,795 76,900
 253 6525446,637 656560,326 76,700
 254 6525444,320 656556,520 76,870
 255 6525444,154 656549,237 76,920
 256 6525441,175 656542,783 77,160
 257 6525442,996 656536,825 77,600
 258 6525447,464 656539,142 76,700
 259 6525447,795 656542,452 76,650
 260 6525451,271 656545,100 76,600
 261 6525455,243 656542,948 76,430
 262 6525455,243 656539,142 76,100
 263 6525452,264 656536,825 75,920
 264 6525449,781 656536,825 76,890
 265 6525450,112 656536,163 76,000
 266 6525450,774 656538,480 75,100

267 6525452,264 656539,473 75,040
 268 6525453,257 656542,121 75,050
 269 6525452,429 656542,617 75,170
 270 6525449,781 656541,128 75,120
 271 6525449,616 656542,286 75,390
 272 6525451,271 656541,624 74,480
 273 6525447,464 656534,177 75,900
 274 6525444,651 656530,536 76,330
 275 6525444,485 656524,908 76,930
 276 6525446,140 656525,074 76,710
 277 6525446,968 656524,908 76,170
 278 6525447,795 656521,764 76,130
 279 6525447,961 656521,267 76,650
 280 6525445,809 656518,619 76,970
 281 6525450,278 656521,267 76,470
 282 6525450,278 656521,929 76,120
 283 6525452,098 656523,253 76,550
 284 6525451,436 656523,915 76,050
 285 6525452,264 656525,239 77,410
 286 6525450,774 656526,894 77,190
 287 6525450,278 656526,398 76,510
 288 6525449,947 656526,067 76,080
 289 6525449,285 656524,412 75,400
 290 6525449,616 656527,722 77,260
 291 6525448,954 656527,225 76,480
 292 6525448,954 656526,729 76,240
 293 6525448,623 656526,398 76,030
 294 6525447,630 656526,067 76,310
 295 6525447,133 656525,736 76,380
 296 6525446,968 656530,205 76,150
 297 6525447,795 656530,867 76,380
 298 6525448,954 656531,198 76,170
 299 6525448,788 656529,708 77,150
 300 6525449,947 656527,225 76,530
 301 6525450,278 656527,391 77,200
 302 6525450,940 656528,218 76,380
 303 6525452,098 656526,067 77,240
 304 6525452,595 656525,239 76,840
 305 6525452,595 656526,563 76,510
 306 6525455,739 656527,225 77,340
 307 6525456,236 656527,225 77,130
 308 6525455,243 656527,887 75,940
 309 6525462,691 656529,542 77,210
 310 6525462,691 656529,708 77,370
 311 6525462,029 656530,701 76,630
 312 6525464,180 656532,853 77,140
 313 6525464,346 656532,687 77,180
 314 6525464,346 656534,508 76,470
 315 6525462,691 656534,673 75,980
 316 6525459,215 656534,342 75,960
 317 6525453,588 656534,342 75,770
 318 6525461,698 656540,466 76,050
 319 6525459,877 656547,086 76,220
 320 6525453,753 656548,906 76,270

321 6525455,905 656554,203 76,440
 322 6525455,408 656554,534 76,150
 323 6525453,422 656553,706 76,300
 324 6525452,264 656554,203 76,060
 325 6525449,781 656556,685 76,420
 326 6525450,774 656557,513 75,960
 327 6525454,084 656559,995 76,380
 328 6525453,919 656559,499 76,210
 329 6525456,070 656558,175 76,300
 330 6525455,905 656557,182 76,100
 331 6525453,919 656556,851 75,180
 332 6525459,546 656562,643 76,420
 333 6525453,919 656568,105 76,470
 334 6525456,401 656573,567 76,050
 335 6525471,959 656560,326 76,810
 336 6525476,924 656553,541 76,670
 337 6525480,565 656547,417 76,430
 338 6525485,861 656542,783 76,890
 339 6525490,330 656535,832 76,910
 340 6525492,978 656531,032 77,140
 341 6525491,488 656524,081 77,250
 342 6525486,192 656522,095 76,740
 343 6525483,379 656519,612 76,870
 344 6525482,055 656514,647 76,960
 345 6525480,731 656510,344 78,080
 346 6525480,731 656509,185 78,300
 347 6525480,731 656512,496 77,190
 348 6525480,896 656515,309 76,830
 349 6525480,234 656516,633 76,880
 350 6525482,386 656518,123 77,000
 351 6525481,393 656518,454 76,230
 352 6525482,220 656522,095 76,870
 353 6525481,393 656522,095 76,150
 354 6525476,758 656522,591 77,090
 355 6525476,758 656521,102 76,340
 356 6525476,096 656518,785 77,440
 357 6525477,255 656518,785 76,430
 358 6525478,745 656518,288 76,310
 359 6525478,082 656517,461 77,390
 360 6525475,931 656515,475 77,310
 361 6525472,124 656512,496 78,340
 362 6525470,304 656508,689 78,670
 363 6525471,131 656504,055 79,120
 364 6525471,131 656522,591 77,260
 365 6525468,483 656524,081 77,270
 366 6525463,187 656523,419 76,970
 367 6525459,877 656519,778 76,840
 368 6525455,574 656515,640 76,800
 369 6525449,947 656514,482 76,600
 370 6525450,774 656509,682 76,730
 371 6525450,940 656506,868 76,860
 372 6525452,098 656505,544 76,970
 373 6525455,739 656506,537 76,760
 374 6525457,560 656509,351 76,920

375 6525460,043 656512,330 77,120
 376 6525464,180 656516,468 77,690
 377 6525466,828 656536,494 76,470
 378 6525469,311 656531,694 77,030
 379 6525470,800 656531,694 76,190
 380 6525475,931 656529,377 77,180
 381 6525477,089 656530,205 76,110
 382 6525480,234 656527,556 77,090
 383 6525481,062 656527,887 76,930
 384 6525485,034 656525,405 76,820
 385 6525487,020 656528,880 76,740
 386 6525486,523 656529,542 76,080
 387 6525482,882 656529,377 76,350
 388 6525482,551 656530,701 75,730
 389 6525479,903 656532,191 76,080
 390 6525480,069 656532,853 75,860
 391 6525481,227 656535,335 76,220
 392 6525482,882 656535,335 76,120
 393 6525487,847 656534,508 76,790
 394 6525487,020 656533,018 75,780
 395 6525486,358 656531,694 75,560
 396 6525486,854 656530,039 76,550
 397 6525473,448 656541,955 76,220
 398 6525472,786 656542,286 75,150
 399 6525474,938 656541,955 76,270
 400 6525478,082 656544,272 76,420
 401 6525478,745 656547,582 76,690
 402 6525478,082 656551,058 76,810
 403 6525475,600 656552,217 76,960
 404 6525473,945 656549,899 76,420
 405 6525472,786 656548,410 76,620
 406 6525471,793 656545,927 75,520
 407 6525476,427 656550,230 78,120
 408 6525476,593 656550,230 78,010
 409 6525476,593 656548,410 77,900
 410 6525476,427 656548,244 78,190
 411 6525475,765 656546,093 78,000
 412 6525475,269 656545,927 78,050
 413 6525468,483 656547,086 76,260
 414 6525467,325 656543,776 76,530
 415 6525467,656 656541,955 76,460
 416 6525470,304 656540,631 76,330
 417 6525470,469 656542,121 75,040
 418 6525470,635 656543,279 74,670
 419 6525469,311 656542,617 74,950
 420 6525468,980 656544,934 74,940
 421 6525471,462 656505,213 79,140
 422 6525474,607 656501,572 79,150
 423 6525454,250 656493,297 78,910
 424 6525446,802 656491,146 78,780
 425 6525446,306 656487,670 78,630
 426 6525443,327 656490,484 79,800
 427 6525441,837 656493,628 79,310
 428 6525440,844 656492,470 80,360

429 6525441,672 656501,241 79,440
 430 6525440,513 656501,572 81,050
 431 6525439,686 656508,854 80,130
 432 6525438,858 656509,020 81,310
 433 6525436,706 656512,165 80,570
 434 6525435,879 656511,503 80,500
 435 6525436,375 656511,006 81,140
 436 6525448,126 656472,775 79,200
 437 6525460,043 656474,926 77,018
 438 6525463,187 656467,975 76,470
 439 6525479,572 656464,830 76,560
 440 6525488,675 656463,672 77,020
 441 6525498,605 656457,548 78,970
 442 6525507,377 656452,749 78,930
 443 6525518,631 656446,294 78,840
 444 6525361,733 656637,782 91,880
 445 6525361,733 656637,782 91,880
 446 6525361,733 656637,782 91,880
 447 6525361,733 656637,782 91,880
 448 6525361,733 656637,782 91,880
 449 6525361,733 656637,782 91,880
 450 6525361,733 656637,782 91,870
 451 6525361,733 656637,782 91,880
 452 6525361,733 656637,782 91,880
 453 6525361,733 656637,782 91,880
 454 6525361,733 656637,782 91,880
 455 6525459,050 656504,551 79,320
 456 6525467,987 656578,201 76,570
 457 6525467,821 656582,007 76,690
 458 6525464,677 656584,490 76,320
 459 6525461,201 656585,317 76,160
 460 6525465,339 656567,774 76,390
 461 6525472,124 656564,629 76,820
 462 6525471,959 656574,229 77,080
 463 6525475,103 656557,678 77,140
 464 6525480,069 656550,230 76,630
 465 6525486,192 656542,783 76,700
 466 6525490,826 656536,163 76,900
 467 6525493,143 656529,708 77,000
 468 6525493,309 656523,915 77,470
 469 6525491,323 656521,929 77,380
 470 6525486,689 656522,095 76,770
 471 6525482,882 656516,302 77,010
 472 6525480,896 656512,661 76,710
 473 6525470,966 656504,220 79,210
 474 6525472,621 656502,069 79,250
 475 6525475,931 656501,903 78,890
 476 6525477,089 656504,055 78,980
 477 6525479,572 656506,537 78,780
 478 6525480,234 656508,689 78,600
 479 6525481,393 656509,185 78,810
 480 6525481,393 656507,530 78,870
 481 6525482,551 656505,710 79,220
 482 6525484,537 656503,393 79,140

483 6525486,523 656499,917 79,170
 484 6525487,516 656496,442 79,150
 485 6525487,516 656493,628 79,090
 486 6525487,516 656491,808 79,220
 487 6525489,171 656490,318 79,120
 488 6525488,178 656486,842 78,940
 489 6525485,199 656484,360 78,900
 490 6525481,227 656485,518 78,960
 491 6525478,248 656487,008 79,070
 492 6525475,434 656488,829 79,210
 493 6525473,779 656489,325 79,160
 494 6525472,124 656488,663 79,230
 495 6525470,800 656487,670 79,130
 496 6525471,959 656487,008 78,450
 497 6525473,117 656487,835 78,310
 498 6525477,751 656485,849 78,090
 499 6525477,586 656484,029 78,110
 500 6525481,558 656481,877 78,080
 501 6525483,048 656482,539 78,140
 502 6525487,847 656479,229 78,030
 503 6525487,351 656476,912 78,010
 504 6525491,819 656473,768 77,930
 505 6525493,143 656474,430 77,900
 506 6525495,129 656472,940 77,670
 507 6525499,102 656471,451 77,650
 508 6525502,081 656470,623 77,650
 509 6525505,556 656472,609 77,710
 510 6525508,535 656473,768 77,650
 511 6525511,349 656468,968 77,680
 512 6525512,838 656466,154 77,690
 513 6525511,845 656463,837 77,670
 514 6525510,190 656462,844 77,610
 515 6525507,873 656464,334 77,900
 516 6525505,722 656464,830 77,680
 517 6525502,081 656466,982 77,690
 518 6525499,433 656469,134 77,660
 519 6525497,446 656469,465 77,700
 520 6525496,950 656466,320 78,720
 521 6525499,102 656465,823 78,870
 522 6525502,246 656464,499 78,760
 523 6525505,225 656462,513 78,670
 524 6525503,901 656461,355 78,700
 525 6525501,584 656458,872 79,010
 526 6525503,239 656456,721 79,060
 527 6525506,715 656455,231 79,120
 528 6525509,528 656454,900 79,310
 529 6525510,521 656456,886 79,160
 530 6525506,053 656457,217 81,250
 531 6525506,384 656458,376 81,190
 532 6525505,556 656459,038 81,110
 533 6525504,894 656458,707 81,050
 534 6525510,025 656457,879 79,360
 535 6525515,652 656458,541 78,650
 536 6525515,817 656458,707 78,070

537 6525511,018 656451,094 79,140
 538 6525459,381 656437,688 79,900
 539 6525491,654 656463,506 79,050
 540 6525495,295 656467,975 79,230
 541 6525493,309 656470,292 79,330
 542 6525488,013 656473,437 79,260
 543 6525481,724 656479,064 79,530
 544 6525477,586 656481,877 79,440
 545 6525471,131 656485,849 79,310
 546 6525469,145 656481,546 79,260
 547 6525477,586 656475,588 79,380
 548 6525485,696 656469,796 79,210
 549 6525492,647 656464,830 79,120
 550 6525472,621 656471,451 76,500
 551 6525435,713 656474,761 79,100
 552 6525442,665 656477,740 78,970
 553 6525452,595 656504,220 79,030
 554 6525454,084 656505,048 79,230
 555 6525454,912 656505,544 79,310
 556 6525456,732 656499,255 79,060
 557 6525453,422 656497,269 78,970
 558 6525440,017 656499,752 81,230
 559 6525438,693 656504,717 81,390
 560 6525438,031 656507,861 81,260
 561 6525435,713 656511,337 80,460
 562 6525432,569 656511,668 80,320
 563 6525432,072 656511,668 80,430
 564 6525432,072 656511,503 80,440
 565 6525431,410 656518,288 80,370
 566 6525430,914 656526,729 80,190
 567 6525437,369 656526,232 79,810
 568 6525439,355 656522,757 79,760
 569 6525439,189 656515,640 79,950
 570 6525423,797 656573,898 79,930
 571 6525423,301 656577,042 79,630
 572 6525425,121 656581,676 79,590
 573 6525431,741 656591,275 79,770
 574 6525437,700 656597,399 80,050
 575 6525437,865 656597,234 80,080
 576 6525426,114 656573,401 79,990
 577 6525424,790 656557,182 79,890
 578 6525427,604 656545,431 79,710
 579 6525425,452 656524,577 80,070
 580 6525428,762 656516,137 80,340
 581 6525429,921 656513,489 80,420
 582 6525464,180 656505,379 79,170
 583 6525457,229 656536,659 77,420
 584 6525456,567 656538,811 76,240
 585 6525459,215 656537,652 76,240
 586 6525466,497 656552,879 76,360
 587 6525464,511 656560,326 76,450
 588 6525461,367 656567,608 76,430
 589 6525469,145 656502,731 79,190
 590 6525471,628 656498,759 79,340

591 6525474,110 656493,628 79,070
 592 6525478,910 656500,414 78,990
 593 6525480,400 656494,290 79,270
 594 6525478,248 656487,339 79,080
 595 6525483,379 656484,525 78,900
 596 6525489,833 656479,891 78,850
 597 6525494,302 656477,078 79,180
 598 6525498,605 656474,264 78,960
 599 6525501,750 656472,775 78,640
 600 6525505,060 656474,430 78,360
 601 6525506,384 656476,250 77,980
 602 6525505,060 656485,684 78,620
 603 6525507,873 656497,435 85,970
 604 6525498,936 656501,903 86,420
 605 6525496,619 656505,213 86,340
 606 6525499,102 656510,179 86,820
 607 6525502,743 656515,640 87,070
 608 6525503,239 656509,848 86,860
 609 6525505,060 656505,379 86,930
 610 6525505,722 656506,868 88,110
 611 6525504,563 656512,165 88,360
 612 6525505,225 656514,647 89,270
 613 6525505,887 656516,964 89,380
 614 6525507,873 656519,281 89,530
 615 6525509,363 656522,591 89,730
 616 6525509,694 656525,570 89,750
 617 6525510,356 656528,880 90,050
 618 6525511,183 656531,198 90,690
 619 6525510,190 656533,349 89,130
 620 6525509,197 656536,163 89,110
 621 6525507,542 656537,321 89,200
 622 6525507,046 656538,976 90,080
 623 6525506,053 656542,286 90,420
 624 6525505,225 656544,107 89,890
 625 6525504,729 656545,100 89,270
 626 6525501,088 656550,065 89,220
 627 6525496,453 656553,541 89,370
 628 6525493,971 656555,527 89,840
 629 6525492,812 656558,506 89,990
 630 6525490,826 656561,981 89,670
 631 6525490,661 656566,119 89,780
 632 6525489,502 656569,429 89,650
 633 6525487,185 656571,746 89,240
 634 6525487,020 656575,553 88,910
 635 6525488,013 656579,856 89,350
 636 6525486,358 656586,310 89,040
 637 6525484,537 656590,448 88,740
 638 6525478,910 656591,606 86,070
 639 6525474,607 656596,075 85,500
 640 6525469,807 656599,716 85,480
 641 6525461,532 656592,600 79,720
 642 6525465,173 656592,600 80,380
 643 6525465,008 656591,772 80,480
 644 6525468,483 656590,779 80,840

645 6525466,994 656589,620 80,590
 646 6525469,807 656587,634 80,270
 647 6525466,663 656588,296 80,560
 648 6525465,008 656590,282 80,900
 649 6525465,339 656590,779 81,050
 650 6525463,353 656590,944 80,590
 651 6525463,518 656591,606 80,540
 652 6525460,870 656591,772 79,220
 653 6525460,043 656551,886 76,400
 654 6525462,194 656500,910 79,210
 655 6525507,046 656452,749 79,040
 656 6525513,169 656449,604 79,070
 657 6525516,645 656459,865 78,050
 658 6525513,997 656461,851 77,960
 659 6525516,976 656460,693 78,560
 660 6525518,134 656464,168 79,290
 661 6525518,300 656497,269 86,220
 662 6525404,930 656599,220 80,600
 663 6525395,662 656578,366 79,450
 664 6525388,048 656566,946 79,980
 665 6525404,433 656564,795 79,260
 666 6525408,736 656558,175 79,040
 667 6525408,571 656550,396 79,330
 668 6525411,881 656555,692 79,890
 669 6525410,722 656560,492 80,590
 670 6525410,226 656566,946 81,190
 671 6525411,550 656574,725 80,790
 672 6525417,177 656573,070 80,500
 673 6525423,963 656589,786 84,080
 674 6525425,452 656591,937 84,640
 675 6525426,611 656594,089 85,840
 676 6525427,273 656597,896 87,890
 677 6525428,100 656600,378 89,620
 678 6525429,424 656601,868 91,200
 679 6525430,914 656605,674 89,720
 680 6525428,266 656605,840 90,850
 681 6525428,928 656603,026 91,210
 682 6525425,949 656608,157 89,830
 683 6525425,783 656608,157 89,830
 684 6525425,783 656608,157 89,830
 685 6525425,452 656604,019 90,500
 686 6525422,804 656604,681 89,600
 687 6525418,667 656618,584 89,090
 688 6525430,914 656610,805 89,760
 689 6525433,562 656613,619 89,630
 690 6525429,259 656617,260 88,970
 691 6525428,928 656624,707 88,650
 692 6525437,369 656625,535 88,590
 693 6525446,140 656626,693 88,930
 694 6525452,760 656622,225 89,180
 695 6525461,532 656618,087 88,940
 696 6525466,663 656615,274 88,930
 697 6525471,793 656614,281 88,810
 698 6525470,635 656611,963 89,840

699 6525470,138 656610,805 89,930
 700 6525465,504 656610,308 91,790
 701 6525464,346 656608,653 92,960
 702 6525463,849 656607,826 93,090
 703 6525460,539 656609,481 93,030
 704 6525460,705 656611,136 92,700
 705 6525454,084 656612,791 92,690
 706 6525454,415 656614,612 92,650
 707 6525449,781 656613,619 92,130
 708 6525449,947 656615,936 92,530
 709 6525445,313 656614,943 91,800
 710 6525446,471 656620,239 91,890
 711 6525443,989 656622,887 91,750
 712 6525443,161 656621,728 91,770
 713 6525440,679 656617,756 91,760
 714 6525440,348 656614,612 91,490
 715 6525436,375 656618,584 91,440
 716 6525435,879 656615,770 90,990
 717 6525432,900 656619,080 91,300
 718 6525434,389 656620,901 91,240
 719 6525467,656 656610,970 90,560
 720 6525471,297 656610,474 89,590
 721 6525472,786 656612,129 89,530
 722 6525474,607 656610,143 89,580
 723 6525475,765 656611,632 89,880
 724 6525476,758 656601,206 85,500
 725 6525474,110 656597,399 85,430
 726 6525479,241 656596,572 85,760
 727 6525464,842 656601,868 85,640
 728 6525468,152 656603,688 85,700
 729 6525472,124 656602,530 85,430
 730 6525478,579 656609,481 90,860
 731 6525481,558 656604,847 90,830
 732 6525482,882 656605,178 91,080
 733 6525483,710 656597,565 90,790
 734 6525486,192 656597,896 91,400
 735 6525486,854 656592,103 91,940
 736 6525488,840 656591,606 91,940
 737 6525486,689 656587,469 91,700
 738 6525488,344 656586,807 91,650
 739 6525487,516 656582,338 90,950
 740 6525489,668 656581,180 91,060
 741 6525489,668 656574,891 90,800
 742 6525493,474 656575,387 90,180
 743 6525494,798 656571,912 90,370
 744 6525491,819 656570,091 91,680
 745 6525493,805 656567,939 91,620
 746 6525496,453 656565,953 90,550
 747 6525498,605 656563,471 89,250
 748 6525497,281 656573,898 88,640
 749 6525493,143 656580,518 88,800
 750 6525492,481 656589,289 88,820
 751 6525488,675 656599,882 88,700
 752 6525484,868 656607,329 88,590

753 6525481,724 656612,294 88,500
 754 6525476,593 656613,288 88,620
 755 6525496,122 656564,464 89,550
 756 6525492,481 656566,284 90,040
 757 6525496,619 656556,520 89,470
 758 6525500,095 656553,210 89,430
 759 6525508,866 656501,903 86,600
 760 6525512,176 656500,248 86,430
 761 6525515,321 656498,759 86,320
 762 6525517,969 656529,377 88,810
 763 6525516,976 656536,990 88,750
 764 6525513,500 656545,265 88,640
 765 6525509,528 656552,051 88,580
 766 6525504,894 656558,837 88,550
 767 6525502,743 656564,133 88,630
 768 6525504,232 656557,678 89,480
 769 6525500,426 656551,389 89,690
 770 6525504,398 656546,589 89,760
 771 6525508,039 656546,920 89,580
 772 6525510,356 656547,748 89,490
 773 6525513,004 656541,955 89,900
 774 6525514,493 656536,163 90,250
 775 6525511,183 656538,480 90,250
 776 6525503,736 656546,920 89,710
 777 6525514,824 656532,853 90,890
 778 6525511,018 656531,860 90,860
 779 6525511,680 656529,211 91,050
 780 6525514,659 656529,211 90,660
 781 6525517,638 656525,405 91,020
 782 6525518,962 656514,647 91,270
 783 6525517,307 656516,633 91,260
 784 6525517,969 656511,668 91,580
 785 6525518,631 656507,861 91,190
 786 6525517,803 656504,220 91,150
 787 6525516,645 656506,868 90,460
 788 6525513,997 656510,179 89,630
 789 6525511,349 656512,496 90,430
 790 6525507,708 656513,654 89,660
 791 6525509,694 656517,295 89,840
 792 6525508,370 656511,337 88,060
 793 6525511,514 656508,027 88,160
 794 6525513,335 656503,393 88,000
 795 6525513,004 656502,069 87,860
 796 6525508,535 656503,724 87,850
 797 6525506,218 656506,041 88,040
 798 6525504,729 656508,854 88,170
 799 6525457,229 656591,110 77,070
 800 6525457,560 656593,924 77,870
 801 6525460,374 656595,248 79,460
 802 6525464,346 656593,758 79,410
 803 6525455,243 656594,255 77,650
 804 6525450,940 656594,917 77,270
 805 6525447,630 656597,565 81,440
 806 6525449,285 656600,709 81,460

807 6525444,982 656599,551 81,820
 808 6525445,809 656602,861 82,020
 809 6525442,003 656600,709 81,740
 810 6525441,341 656604,185 81,650
 811 6525438,693 656602,364 81,330
 812 6525439,851 656599,054 79,800
 813 6525417,674 656573,236 80,490
 814 6525517,307 656360,894 93,580
 815 6525517,307 656362,714 93,550
 816 6525513,500 656361,721 92,870
 817 6525513,169 656363,211 92,410
 818 6525511,514 656363,542 92,370
 819 6525511,018 656362,218 92,270
 820 6525509,197 656365,694 90,920
 821 6525509,859 656392,340 90,800
 822 6525501,253 656393,498 91,290
 823 6525494,302 656393,664 91,320
 824 6525487,020 656392,340 91,450
 825 6525483,048 656390,519 91,610
 826 6525480,400 656387,540 91,310
 827 6525481,227 656386,382 91,380
 828 6525484,372 656387,044 91,370
 829 6525481,062 656385,058 90,430
 830 6525476,924 656385,389 89,350
 831 6525474,441 656388,533 88,150
 832 6525476,262 656393,995 87,930
 833 6525479,738 656399,622 87,460
 834 6525486,523 656403,759 86,500
 835 6525509,032 656422,792 81,030
 836 6525503,901 656418,324 82,190
 837 6525499,102 656414,683 83,570
 838 6525493,640 656412,366 84,760
 839 6525489,502 656411,042 85,670
 840 6525484,868 656411,042 86,160
 841 6525488,675 656411,869 86,230
 842 6525491,819 656414,186 86,040
 843 6525496,122 656414,683 85,140
 844 6525495,295 656417,165 85,610
 845 6525492,647 656416,172 86,090
 846 6525491,819 656417,993 86,140
 847 6525489,006 656417,662 86,300
 848 6525489,006 656415,179 86,440
 849 6525488,509 656420,806 86,030
 850 6525486,358 656421,137 86,510
 851 6525485,365 656420,475 86,630
 852 6525484,537 656422,792 86,540
 853 6525483,213 656421,965 86,630
 854 6525482,220 656424,282 86,350
 855 6525486,027 656428,089 85,680
 856 6525488,675 656424,116 85,480
 857 6525491,819 656426,765 84,890
 858 6525493,805 656420,144 84,670
 859 6525496,950 656422,958 84,420
 860 6525499,102 656417,331 84,090

861 6525500,591 656421,634 83,810
 862 6525501,915 656424,613 83,370
 863 6525503,901 656422,461 82,960
 864 6525507,046 656423,785 82,680
 865 6525508,039 656424,613 82,380
 866 6525503,736 656427,427 82,670
 867 6525500,260 656427,261 83,600
 868 6525495,626 656427,923 84,300
 869 6525491,819 656428,585 84,690
 870 6525488,344 656432,226 84,950
 871 6525483,213 656434,709 85,300
 872 6525480,731 656435,205 85,690
 873 6525476,593 656433,716 85,770
 874 6525473,614 656430,075 86,040
 875 6525474,938 656428,254 86,270
 876 6525477,420 656427,758 86,710
 877 6525470,304 656429,578 86,460
 878 6525466,663 656426,765 87,350
 879 6525461,532 656422,792 88,150
 880 6525455,243 656421,799 88,260
 881 6525447,464 656421,137 88,850
 882 6525442,334 656420,972 89,850
 883 6525439,024 656420,475 90,020
 884 6525434,720 656422,130 92,650
 885 6525428,928 656423,785 92,630
 886 6525420,156 656427,592 92,980
 887 6525423,632 656421,634 92,550
 888 6525430,583 656416,172 91,910
 889 6525433,065 656418,324 92,570
 890 6525435,879 656417,993 92,240
 891 6525437,369 656413,028 91,230
 892 6525440,348 656406,573 90,780
 893 6525441,010 656407,235 90,140
 894 6525438,858 656413,193 90,100
 895 6525438,527 656416,503 90,100
 896 6525444,982 656413,359 89,620
 897 6525450,774 656410,711 89,140
 898 6525445,313 656403,263 89,780
 899 6525451,105 656397,967 89,600
 900 6525454,581 656393,498 89,530
 901 6525456,070 656386,547 89,360
 902 6525455,077 656383,071 88,830
 903 6525451,105 656378,437 88,940
 904 6525447,795 656377,444 88,660
 905 6525459,712 656375,624 89,200
 906 6525467,656 656375,789 89,090
 907 6525474,607 656391,016 88,030
 908 6525478,745 656398,960 87,570
 909 6525484,041 656402,104 87,130
 910 6525475,103 656392,836 88,000
 911 6525469,973 656379,430 88,720
 912 6525465,008 656368,011 88,910
 913 6525470,635 656359,735 89,080
 914 6525481,227 656353,281 89,490

915 6525486,192 656344,013 88,880
 916 6525491,819 656336,234 88,410
 917 6525503,074 656334,744 88,620
 918 6525511,349 656335,737 88,030
 919 6525515,817 656355,432 90,530
 920 6525511,183 656357,749 90,610
 921 6525507,377 656362,052 90,840
 922 6525503,570 656355,929 90,350
 923 6525510,521 656348,647 90,290
 924 6525496,950 656347,654 90,080
 925 6525496,288 656364,535 90,200
 926 6525481,889 656364,370 90,450
 927 6525477,751 656359,404 90,230
 928 6525471,959 656367,349 90,560
 929 6525475,600 656374,796 90,830
 930 6525491,819 656370,824 90,310
 931 6525498,274 656368,507 90,070
 932 6525502,081 656371,652 91,050
 933 6525489,668 656377,444 91,170
 934 6525481,062 656379,761 91,260
 935 6525480,896 656387,540 91,550
 936 6525484,703 656391,512 91,500
 937 6525488,013 656392,836 91,460
 938 6525484,206 656403,263 86,740
 939 6525512,176 656417,827 81,080
 940 6525464,677 656434,874 82,790
 941 6525460,705 656433,881 82,790
 942 6525460,705 656432,723 82,840
 943 6525455,408 656432,723 82,840
 944 6525454,581 656431,233 83,110
 945 6525450,774 656434,543 82,790
 946 6525447,630 656431,233 82,730
 947 6525442,499 656432,392 83,080
 948 6525442,665 656435,371 82,630
 949 6525440,844 656429,744 84,880
 950 6525440,017 656431,564 85,700
 951 6525446,471 656438,184 82,520
 952 6525441,837 656441,494 82,660
 953 6525439,851 656438,184 82,900
 954 6525438,693 656435,536 82,880
 955 6525432,900 656434,874 84,280
 956 6525435,548 656438,019 83,730
 957 6525438,362 656442,322 83,610
 958 6525432,900 656442,653 83,770
 959 6525431,245 656439,508 84,330
 960 6525424,459 656437,688 86,060
 961 6525424,790 656440,832 85,570
 962 6525426,611 656444,804 85,260
 963 6525418,005 656444,970 84,890
 964 6525451,602 656438,350 79,860
 965 6525425,121 656464,499 79,350
 966 6525427,107 656469,630 79,360
 967 6525423,301 656562,478 80,260
 968 6525417,343 656554,368 80,220

969 6525417,839 656548,410 80,010
 970 6525406,750 656543,610 78,520
 971 6525404,930 656547,417 78,590
 972 6525424,625 656541,955 79,960
 973 6525424,128 656529,046 80,130
 974 6525442,334 656491,146 80,520
 975 6525441,175 656487,835 78,290
 976 6525437,038 656491,642 78,030
 977 6525436,210 656497,600 77,820
 978 6525435,713 656500,579 77,800
 979 6525434,224 656503,724 77,820
 980 6525431,576 656500,745 78,980
 981 6525429,755 656504,055 78,870
 982 6525430,748 656498,593 78,300
 983 6525431,410 656497,104 77,790
 984 6525432,238 656493,959 77,790
 985 6525427,438 656495,614 78,150
 986 6525427,107 656490,980 78,160
 987 6525429,259 656487,835 78,740
 988 6525433,231 656486,346 78,740
 989 6525436,210 656489,987 78,090
 990 6525431,576 656493,463 77,770
 991 6525428,597 656498,262 77,420
 992 6525435,713 656490,153 78,060
 993 6525439,189 656487,339 78,220
 994 6525437,534 656486,346 79,000
 995 6525442,003 656485,684 78,740
 996 6525442,665 656486,511 78,360
 997 6525444,154 656485,187 79,200
 998 6525443,327 656483,698 79,730
 999 6525442,665 656482,374 79,110
 1000 6525446,637 656482,870 78,930
 1001 6525446,306 656484,029 79,640
 1002 6525446,306 656484,525 79,520
 1003 6525444,982 656481,877 78,920
 1004 6525442,996 656482,374 79,060
 1005 6525441,010 656482,208 79,490
 1006 6525441,010 656482,208 79,480
 1007 6525441,010 656482,208 79,480
 1008 6525436,044 656482,043 79,100
 1009 6525429,590 656481,050 79,200
 1010 6525424,459 656485,518 79,320
 1011 6525419,825 656477,409 79,390
 1012 6525417,177 656470,292 79,440
 1013 6525407,578 656478,071 79,470
 1014 6525398,972 656473,602 79,600
 1015 6525398,144 656463,010 79,720
 1016 6525361,733 656637,782 91,890
 1017 6525425,618 656649,036 88,100
 1018 6525421,315 656399,456 91,330
 1019 6525373,815 656459,700 80,390
 1020 6525371,332 656457,052 80,510
 1021 6525367,360 656453,907 80,550
 1022 6525376,132 656444,308 80,450

1023 6525382,587 656437,522 81,550
 1024 6525385,731 656447,949 82,040
 1025 6525386,228 656446,294 81,480
 1026 6525387,717 656444,308 81,870
 1027 6525387,552 656441,329 80,870
 1028 6525388,379 656434,874 84,450
 1029 6525394,503 656433,881 88,640
 1030 6525380,435 656570,587 80,290
 1031 6525371,001 656563,471 81,050
 1032 6525360,409 656550,396 82,160
 1033 6525369,843 656542,286 81,900
 1034 6525381,594 656535,335 80,920
 1035 6525389,538 656531,529 80,610
 1036 6525395,330 656525,570 80,830
 1037 6525400,461 656526,398 79,770
 1038 6525402,944 656541,624 78,910
 1039 6525391,358 656551,886 79,700
 1040 6525401,951 656521,764 77,930
 1041 6525396,158 656518,123 77,990
 1042 6525396,158 656504,551 78,000
 1043 6525386,724 656508,192 78,030
 1044 6525387,055 656517,626 78,490
 1045 6525391,027 656526,232 78,220
 1046 6525382,587 656529,873 79,320
 1047 6525371,167 656535,997 80,060
 1048 6525360,078 656542,783 80,270
 1049 6525357,761 656525,074 80,690
 1050 6525360,409 656506,537 80,070
 1051 6525379,773 656523,584 80,180
 1052 6525381,594 656513,323 79,930
 1053 6525378,284 656505,048 80,130
 1054 6525379,277 656486,677 79,850
 1055 6525389,041 656500,745 79,910
 1056 6525396,489 656497,600 79,010
 1057 6525400,958 656446,790 80,160
 1058 6525393,510 656448,280 79,990
 1059 6525382,421 656463,672 79,900
 1060 6525363,388 656473,602 79,900
 1061 6525360,078 656408,228 80,980
 1062 6525368,684 656646,223 90,260
 1063 6525366,202 656633,645 92,210
 1064 6525371,829 656632,155 92,770
 1065 6525413,039 656624,211 89,070
 1066 6525409,398 656620,901 89,370
 1067 6525374,311 656664,263 88,860
 1068 6525380,270 656681,475 88,260
 1069 6525410,226 656673,365 87,830
 1070 6525406,419 656653,836 88,370
 1071 6525428,431 656634,141 88,300
 1072 6525434,720 656651,684 87,990
 1073 6525438,031 656665,918 87,940
 1074 6525467,490 656688,757 86,630
 1075 6525459,877 656660,622 87,420
 1076 6525453,257 656637,286 88,290

1077 6525475,931 656636,955 87,630
 1078 6525482,386 656655,988 87,120
 1079 6525493,309 656681,144 85,930
 1080 6525513,500 656647,878 86,450
 1081 6525507,046 656626,031 87,060
 1082 6525499,764 656601,206 88,150
 1083 6525463,187 656313,229 87,050
 1084 6525472,621 656298,333 86,910
 1085 6525480,565 656300,319 86,900
 1086 6525485,365 656279,962 86,660
 1087 6525492,316 656289,727 86,850
 1088 6525506,880 656300,154 86,630
 1089 6525510,356 656325,476 87,140
 1090 6525482,220 656334,248 88,190
 1091 6525357,265 656607,991 79,560
 1092 6525351,141 656596,572 79,960
 1093 6525362,561 656589,455 80,870
 1094 6525353,127 656577,870 81,120
 1095 6525338,728 656579,690 80,570
 1096 6525424,956 656413,028 91,330
 1097 6525423,632 656407,235 90,720
 1098 6525415,853 656414,517 92,060
 1099 6525409,067 656410,876 92,390
 1100 6525408,571 656404,421 91,670
 1101 6525414,694 656399,787 92,610
 1102 6525406,088 656396,974 91,640
 1103 6525409,895 656386,382 92,040
 1104 6525415,853 656394,326 90,610
 1105 6525417,012 656385,720 89,000
 1106 6525423,963 656377,610 88,000
 1107 6525430,583 656365,363 87,440
 1108 6525433,562 656359,735 88,150
 1109 6525443,161 656358,577 87,360
 1110 6525442,334 656361,390 87,920
 1111 6525438,693 656370,493 87,550
 1112 6525447,299 656372,976 87,980
 1113 6525435,382 656403,097 90,390
 1114 6525441,672 656387,706 89,020
 1115 6525436,706 656382,409 88,360
 1116 6525425,783 656392,505 89,200
 1117 6525425,783 656400,946 90,070
 1118 6525434,720 656334,744 86,690
 1119 6525461,367 656312,070 86,900
 1120 6525470,635 656297,009 86,840
 1121 6525511,018 656266,391 86,090
 1122 6525477,420 656250,503 85,860
 1123 6525454,581 656282,445 86,300
 1124 6525443,327 656308,264 87,090
 1125 6525420,984 656355,267 85,590
 1126 6525120,925 656352,950 92,600
 1127 6525120,428 656368,176 94,440
 1128 6525133,834 656363,873 93,340
 1129 6525136,151 656352,619 91,050
 1130 6525159,818 656355,763 91,380

1131 6525179,348 656337,723 88,340
 1132 6525187,954 656339,378 88,270
 1133 6525175,872 656358,742 90,440
 1134 6525186,133 656370,162 90,240
 1135 6525196,064 656349,971 88,390
 1136 6525200,698 656362,052 88,820
 1137 6525190,933 656362,880 89,390
 1138 6525200,698 656383,237 88,280
 1139 6525199,539 656413,524 90,330
 1140 6525194,409 656405,249 90,520
 1141 6525187,623 656392,505 90,320
 1142 6525177,196 656378,272 91,180
 1143 6525173,059 656390,685 92,310
 1144 6525164,287 656385,720 93,530
 1145 6525154,191 656375,789 93,250
 1146 6525135,489 656380,754 95,260
 1147 6525153,033 656389,857 95,220
 1148 6525134,827 656395,484 97,390
 1149 6525122,911 656394,988 97,370
 1150 6525120,594 656416,669 99,540
 1151 6525136,648 656417,331 99,390
 1152 6525151,212 656408,890 97,480
 1153 6525149,392 656418,820 98,550
 1154 6525163,625 656418,986 96,500
 1155 6525168,259 656406,904 94,290
 1156 6525184,147 656418,324 92,290
 1157 6525194,078 656420,641 91,300
 1158 6525200,532 656432,888 93,050
 1159 6525185,140 656439,177 95,290
 1160 6525174,879 656428,585 95,350
 1161 6525165,942 656435,867 97,550
 1162 6525157,336 656431,895 98,420
 1163 6525152,536 656444,308 99,120
 1164 6525143,930 656438,350 99,230
 1165 6525143,764 656427,261 99,460
 1166 6525137,475 656432,226 99,720
 1167 6525124,069 656435,867 #####
 1168 6525121,918 656451,756 #####
 1169 6525141,116 656461,686 #####
 1170 6525147,571 656460,693 #####
 1171 6525152,867 656456,555 #####
 1172 6525160,315 656447,453 99,370
 1173 6525165,776 656463,506 99,040
 1174 6525171,735 656461,851 98,260
 1175 6525183,154 656449,439 97,250
 1176 6525181,499 656463,506 98,880
 1177 6525188,947 656466,982 98,990
 1178 6525196,560 656465,658 99,190
 1179 6525201,691 656449,770 96,120
 1180 6525203,180 656470,623 98,070
 1181 6525196,560 656477,243 97,390
 1182 6525186,795 656493,794 85,930
 1183 6525184,975 656504,220 86,870
 1184 6525179,017 656498,924 86,500

1185	6525181,003	656491,146	86,170	1239	6525194,574	656685,944	90,790
1186	6525177,858	656487,504	86,130	1240	6525198,877	656695,543	89,480
1187	6525172,728	656485,022	86,010	1241	6525204,835	656692,895	89,760
1188	6525169,087	656492,635	86,740	1242	6525203,511	656705,804	87,990
1189	6525198,215	656505,710	91,800	1243	6525195,071	656704,149	88,310
1190	6525201,194	656519,281	91,240	1244	6525215,262	656716,231	88,260
1191	6525193,912	656518,288	91,560	1245	6525221,717	656703,487	89,930
1192	6525177,527	656511,834	91,100	1246	6525232,309	656701,170	90,190
1193	6525171,735	656514,978	96,690	1247	6525241,743	656699,515	90,640
1194	6525170,576	656523,419	92,090	1248	6525258,128	656695,212	90,940
1195	6525184,975	656529,046	91,130	1249	6525249,025	656702,991	91,140
1196	6525182,327	656532,025	91,740	1250	6525239,426	656705,473	90,940
1197	6525194,243	656539,804	91,250	1251	6525263,589	656692,233	91,360
1198	6525202,518	656546,424	90,740	1252	6525269,382	656686,937	91,830
1199	6525146,247	656485,022	99,870	1253	6525269,713	656699,681	90,930
1200	6525120,594	656477,905	99,690	1254	6525269,547	656710,107	89,630
1201	6525126,387	656482,043	98,660	1255	6525292,056	656704,480	88,550
1202	6525133,669	656494,621	97,730	1256	6525294,539	656692,564	89,710
1203	6525129,697	656506,868	97,830	1257	6525292,718	656681,475	90,450
1204	6525133,503	656521,764	97,620	1258	6525225,027	656674,524	91,660
1205	6525131,352	656533,184	97,040	1259	6525215,593	656677,172	91,790
1206	6525133,007	656540,962	97,790	1260	6525205,332	656674,193	92,040
1207	6525140,454	656539,142	98,360	1261	6525211,456	656673,200	92,470
1208	6525145,254	656534,011	98,130	1262	6525209,304	656604,516	91,400
1209	6525143,930	656515,144	97,880	1263	6525208,311	656594,586	90,570
1210	6525138,799	656515,475	98,290	1264	6525285,932	656589,620	87,280
1211	6525152,702	656491,477	98,500	1265	6525295,532	656581,014	86,450
1212	6525155,019	656473,106	#####	1266	6525292,222	656568,767	85,440
1213	6525160,480	656467,478	99,900	1267	6525263,093	656556,851	85,680
1214	6525155,350	656547,748	99,680	1268	6525255,811	656560,492	86,380
1215	6525143,433	656556,023	99,190	1269	6525265,079	656568,932	86,230
1216	6525148,233	656569,098	99,520	1270	6525271,202	656574,394	85,810
1217	6525156,012	656583,993	99,640	1271	6525246,708	656560,492	87,620
1218	6525165,280	656594,917	99,830	1272	6525207,980	656580,187	90,620
1219	6525153,364	656590,779	98,530	1273	6525207,649	656555,196	90,610
1220	6525157,336	656564,960	#####	1274	6525215,924	656559,333	89,500
1221	6525161,970	656578,863	#####	1275	6525204,008	656538,976	90,140
1222	6525170,080	656562,643	#####	1276	6525230,323	656548,575	88,540
1223	6525174,052	656574,560	#####	1277	6525207,980	656526,894	90,250
1224	6525181,665	656605,343	99,870	1278	6525215,097	656518,950	89,400
1225	6525188,285	656618,087	98,610	1279	6525222,875	656530,370	89,320
1226	6525171,569	656609,646	98,630	1280	6525234,957	656537,156	87,810
1227	6525173,721	656619,742	97,620	1281	6525238,764	656533,349	86,820
1228	6525181,499	656631,327	96,700	1282	6525236,281	656528,218	86,200
1229	6525166,273	656627,521	95,530	1283	6525227,344	656524,577	86,710
1230	6525193,581	656627,686	97,810	1284	6525228,833	656509,848	86,380
1231	6525197,719	656637,617	95,770	1285	6525217,745	656510,013	87,310
1232	6525203,015	656634,969	95,780	1286	6525217,579	656502,565	87,110
1233	6525182,989	656646,057	94,700	1287	6525225,358	656498,097	86,630
1234	6525173,721	656642,582	94,510	1288	6525218,572	656481,546	87,690
1235	6525178,686	656657,808	92,750	1289	6525224,861	656488,001	87,140
1236	6525191,761	656667,407	92,510	1290	6525236,943	656490,318	87,330
1237	6525194,740	656675,021	91,720	1291	6525248,032	656495,614	86,830
1238	6525187,623	656683,627	90,590	1292	6525254,156	656500,248	86,760

1293 6525266,899 656507,861 85,130
 1294 6525265,079 656518,288 85,000
 1295 6525254,983 656517,792 85,200
 1296 6525242,736 656512,992 85,720
 1297 6525233,137 656503,227 86,250
 1298 6525242,239 656526,067 85,970
 1299 6525247,701 656533,184 86,350
 1300 6525255,314 656536,825 85,750
 1301 6525264,582 656535,666 85,240
 1302 6525272,196 656532,025 84,910
 1303 6525280,305 656542,783 84,870
 1304 6525288,249 656536,659 84,660
 1305 6525291,890 656551,720 85,160
 1306 6525296,690 656500,579 84,050
 1307 6525294,042 656498,262 84,540
 1308 6525291,394 656492,304 85,310
 1309 6525291,890 656486,842 85,480
 1310 6525280,636 656502,896 86,570
 1311 6525291,559 656482,043 85,590
 1312 6525285,270 656478,402 85,840
 1313 6525278,485 656475,257 86,720
 1314 6525274,016 656484,360 87,670
 1315 6525266,403 656471,782 89,960
 1316 6525262,596 656479,891 90,710
 1317 6525256,638 656486,180 91,420
 1318 6525248,528 656481,381 91,440
 1319 6525238,764 656474,595 94,120
 1320 6525228,337 656466,816 95,210
 1321 6525219,731 656466,816 96,000
 1322 6525253,328 656467,975 90,510
 1323 6525241,412 656461,355 94,830
 1324 6525231,647 656448,446 95,450
 1325 6525243,729 656454,404 95,180
 1326 6525231,647 656438,350 95,150
 1327 6525227,013 656442,487 95,220
 1328 6525210,297 656443,977 95,450
 1329 6525218,407 656433,881 94,490
 1330 6525231,978 656429,082 94,650
 1331 6525243,067 656434,378 93,780
 1332 6525246,046 656421,965 92,820
 1333 6525238,598 656414,352 93,370
 1334 6525238,598 656407,566 91,840
 1335 6525223,868 656422,792 93,660
 1336 6525207,318 656426,599 92,280
 1337 6525205,994 656409,221 89,390
 1338 6525203,511 656396,312 88,280
 1339 6525211,621 656398,794 87,720
 1340 6525220,889 656390,850 88,400
 1341 6525218,407 656404,256 89,110
 1342 6525227,178 656400,449 90,000
 1343 6525233,302 656397,470 90,450
 1344 6525242,074 656397,305 91,600
 1345 6525238,267 656378,272 90,830
 1346 6525227,344 656381,582 89,250

1347 6525220,558 656371,983 88,280
 1348 6525240,253 656372,314 90,650
 1349 6525256,804 656386,547 92,740
 1350 6525264,251 656385,223 90,980
 1351 6525264,913 656372,810 91,820
 1352 6525267,396 656369,335 91,130
 1353 6525272,858 656372,479 91,330
 1354 6525283,615 656372,976 91,810
 1355 6525285,601 656387,209 90,133
 1356 6525287,587 656394,491 86,890
 1357 6525287,918 656403,428 85,910
 1358 6525283,781 656404,752 85,520
 1359 6525275,837 656398,960 86,490
 1360 6525268,554 656394,491 86,800
 1361 6525261,107 656395,153 86,560
 1362 6525251,839 656399,622 87,180
 1363 6525249,521 656410,380 86,470
 1364 6525257,466 656419,317 85,660
 1365 6525259,948 656435,371 85,890
 1366 6525261,438 656446,294 85,710
 1367 6525269,547 656440,501 84,410
 1368 6525272,692 656435,371 84,310
 1369 6525272,030 656422,130 84,480
 1370 6525260,776 656413,524 85,120
 1371 6525267,065 656406,408 85,140
 1372 6525283,781 656404,587 85,520
 1373 6525287,587 656403,594 85,910
 1374 6525292,718 656430,571 79,940
 1375 6525285,436 656436,529 79,850
 1376 6525289,242 656442,487 79,250
 1377 6525282,457 656444,970 79,500
 1378 6525283,119 656453,245 80,520
 1379 6525280,305 656461,686 82,290
 1380 6525285,436 656470,954 82,860
 1381 6525292,718 656461,355 80,170
 1382 6525293,546 656476,747 82,990
 1383 6525214,104 656362,714 88,750
 1384 6525205,332 656356,591 89,050
 1385 6525203,180 656338,882 89,700
 1386 6525230,323 656343,350 90,940
 1387 6525226,516 656356,756 89,280
 1388 6525235,619 656357,253 89,770
 1389 6525245,549 656356,756 90,230
 1390 6525258,293 656337,061 90,580
 1391 6525268,223 656344,344 89,720
 1392 6525280,471 656340,537 90,340
 1393 6525290,070 656339,544 91,110
 1394 6525257,631 656356,591 90,860
 1395 6525251,673 656356,922 90,740
 1396 6525282,291 656359,404 92,690
 1397 6525292,222 656356,094 93,460
 1398 6525288,415 656368,507 92,120
 1399 6525294,539 656372,148 91,160
 1400 6525305,627 656367,514 90,680

1401 6525341,211 656358,411 89,510
 1402 6525371,332 656359,901 88,890
 1403 6525373,649 656339,544 88,490
 1404 6525361,402 656342,523 89,360
 1405 6525347,500 656345,171 89,070
 1406 6525335,749 656338,385 89,530
 1407 6525361,402 656342,523 89,360
 1408 6525323,998 656338,551 90,650
 1409 6525319,364 656340,537 91,380
 1410 6525296,525 656337,061 91,370
 1411 6525304,303 656347,819 92,420
 1412 6525301,986 656356,260 93,180
 1413 6525315,227 656352,784 91,580
 1414 6525313,903 656363,045 90,890
 1415 6525360,575 656437,357 80,780
 1416 6525371,994 656413,690 82,480
 1417 6525371,332 656391,678 82,490
 1418 6525368,850 656377,444 83,440
 1419 6525352,630 656377,610 82,910
 1420 6525346,838 656378,437 82,850
 1421 6525327,639 656383,402 82,450
 1422 6525319,033 656390,685 82,350
 1423 6525303,972 656400,118 82,450
 1424 6525303,641 656412,035 81,420
 1425 6525310,923 656407,732 80,300
 1426 6525316,220 656407,566 80,000
 1427 6525319,364 656409,718 79,360
 1428 6525306,620 656419,317 79,280
 1429 6525304,303 656422,627 79,920
 1430 6525298,676 656444,804 78,800
 1431 6525294,870 656449,439 79,080
 1432 6525301,821 656465,823 80,610
 1433 6525298,180 656487,504 82,990
 1434 6525306,455 656479,891 81,590
 1435 6525311,585 656474,926 80,880
 1436 6525320,854 656482,539 80,890
 1437 6525325,157 656475,919 80,670
 1438 6525345,514 656475,754 80,130
 1439 6525375,967 656467,644 79,830
 1440 6525372,987 656458,541 80,320
 1441 6525368,519 656462,844 79,900
 1442 6525359,085 656464,168 79,830
 1443 6525341,542 656469,134 80,160
 1444 6525338,232 656464,830 79,860
 1445 6525333,598 656464,996 79,860
 1446 6525330,287 656467,147 79,940
 1447 6525318,537 656467,644 80,730
 1448 6525318,537 656460,693 80,430
 1449 6525311,254 656465,658 80,770
 1450 6525305,958 656453,742 80,410
 1451 6525311,585 656440,998 78,940
 1452 6525321,681 656446,625 79,450
 1453 6525327,143 656444,308 79,630
 1454 6525331,611 656437,853 79,670

1455 6525322,178 656433,219 78,960
 1456 6525335,253 656417,827 78,910
 1457 6525343,031 656431,564 80,520
 1458 6525345,348 656417,331 79,950
 1459 6525358,920 656413,359 80,800
 1460 6525363,223 656393,498 81,890
 1461 6525356,603 656400,946 80,790
 1462 6525351,306 656388,533 81,520
 1463 6525341,542 656398,960 80,470
 1464 6525333,266 656390,023 81,470
 1465 6525330,949 656413,359 78,950
 1466 6525373,153 656479,064 79,820
 1467 6525361,568 656481,712 79,880
 1468 6525370,008 656486,842 79,830
 1469 6525373,649 656504,717 79,910
 1470 6525346,672 656505,048 80,150
 1471 6525358,589 656489,987 79,950
 1472 6525349,817 656487,504 80,050
 1473 6525342,866 656492,470 80,150
 1474 6525328,301 656491,808 80,800
 1475 6525332,770 656501,738 81,200
 1476 6525318,868 656494,621 81,140
 1477 6525308,606 656501,076 81,670
 1478 6525300,000 656498,593 82,800
 1479 6525315,723 656508,027 82,160
 1480 6525317,709 656519,612 84,820
 1481 6525313,075 656512,496 83,900
 1482 6525308,441 656508,523 84,560
 1483 6525308,110 656512,661 85,200
 1484 6525305,296 656514,482 85,750
 1485 6525303,641 656520,605 85,980
 1486 6525300,497 656530,867 85,860
 1487 6525311,254 656527,887 85,970
 1488 6525321,847 656511,999 83,240
 1489 6525331,611 656517,130 82,900
 1490 6525329,460 656538,811 84,570
 1491 6525328,136 656558,175 84,340
 1492 6525320,688 656546,258 85,290
 1493 6525315,227 656537,818 85,390
 1494 6525306,455 656542,121 86,110
 1495 6525305,793 656557,513 85,910
 1496 6525319,530 656564,298 85,720
 1497 6525326,977 656574,229 85,210
 1498 6525307,944 656576,380 86,150
 1499 6525304,138 656579,028 86,430
 1500 6525318,868 656591,275 86,550
 1501 6525324,495 656596,737 87,060
 1502 6525333,101 656591,606 84,680
 1503 6525332,108 656617,922 88,840
 1504 6525340,218 656621,728 89,430
 1505 6525374,311 656520,440 79,360
 1506 6525355,279 656515,640 79,220
 1507 6525343,031 656511,006 79,650
 1508 6525337,901 656520,440 80,430

1509 6525341,045 656539,638 77,920
 1510 6525341,045 656555,692 77,730
 1511 6525353,127 656555,196 78,140
 1512 6525360,575 656564,298 78,940
 1513 6525361,899 656545,596 78,030
 1514 6525352,630 656534,177 78,100
 1515 6525369,843 656534,508 78,150
 1516 6525370,339 656573,898 81,160
 1517 6525357,761 656574,394 79,800
 1518 6525353,458 656571,249 80,860
 1519 6525352,630 656560,326 80,010
 1520 6525340,383 656562,643 80,320
 1521 6525336,908 656566,119 81,250
 1522 6525342,700 656564,464 80,900
 1523 6525350,148 656575,884 80,960
 1524 6525337,570 656580,683 80,520
 1525 6525353,292 656581,345 80,620
 1526 6525350,975 656596,903 80,110
 1527 6525347,996 656596,572 79,970
 1528 6525352,299 656610,805 80,550
 1529 6525363,388 656591,110 80,710
 1530 6525364,381 656630,665 89,750
 1531 6525359,085 656633,479 90,040
 1532 6525345,679 656627,686 87,880
 1533 6525345,514 656637,617 89,790
 1534 6525336,577 656640,596 90,040
 1535 6525337,735 656647,712 90,030
 1536 6525353,127 656643,575 91,390
 1537 6525365,374 656638,279 91,540
 1538 6525368,188 656654,333 89,640
 1539 6525357,430 656658,139 89,750
 1540 6525343,197 656676,510 89,670
 1541 6525342,535 656686,606 89,660
 1542 6525332,273 656691,571 89,920
 1543 6525319,033 656692,067 89,970
 1544 6525311,254 656690,578 89,530
 1545 6525315,889 656681,310 90,170
 1546 6525326,315 656675,186 90,820
 1547 6525335,584 656672,703 90,010
 1548 6525410,888 656583,662 80,300
 1549 6525392,020 656560,326 79,870
 1550 6525399,303 656572,739 79,490
 1551 6525411,550 656553,541 79,890
 1552 6525422,142 656560,161 80,310
 1553 6525420,156 656576,546 79,990
 1554 6525376,960 656545,762 78,210
 1555 6525383,911 656535,170 78,220
 1556 6525389,207 656541,624 78,230
 1557 6525394,172 656532,853 78,400
 1558 6525393,179 656522,922 78,740
 1559 6525385,897 656517,957 79,820
 1560 6525376,960 656514,482 79,890
 1561 6525402,944 656538,314 78,630
 1562 6525413,205 656533,846 80,410

1563 6525419,825 656525,405 80,310
 1564 6525420,156 656539,473 80,450
 1565 6525423,797 656517,957 80,330
 1566 6525426,280 656497,269 78,180
 1567 6525420,487 656498,097 78,900
 1568 6525409,233 656495,614 79,030
 1569 6525414,032 656512,661 79,080
 1570 6525405,095 656513,323 79,060
 1571 6525398,475 656503,889 79,390
 1572 6525387,883 656501,241 79,770
 1573 6525378,449 656497,104 79,890
 1574 6525383,580 656483,698 79,970
 1575 6525391,193 656480,719 79,710
 1576 6525394,668 656487,008 79,590
 1577 6525398,641 656478,071 79,640
 1578 6525408,405 656477,740 79,310
 1579 6525420,818 656469,134 79,410
 1580 6525391,193 656465,658 79,820
 1581 6525415,687 656461,189 80,480
 1582 6525415,522 656346,330 88,510
 1583 6525406,254 656351,791 86,730
 1584 6525409,729 656347,654 86,730
 1585 6525394,337 656339,875 86,680
 1586 6525383,249 656341,695 87,620
 1587 6525420,818 656358,742 89,300
 1588 6525410,722 656362,880 89,350
 1589 6525410,557 656373,803 89,560
 1590 6525405,592 656373,472 90,190
 1591 6525403,771 656380,589 90,220
 1592 6525392,351 656368,176 88,630
 1593 6525390,200 656365,032 88,990
 1594 6525396,489 656382,575 88,700
 1595 6525395,165 656398,794 88,890
 1596 6525397,151 656412,862 88,840
 1597 6525403,771 656401,277 90,750
 1598 6525423,797 656386,878 89,550
 1599 6525420,156 656380,589 89,970
 1600 6525400,627 656433,219 88,910
 1601 6525412,212 656433,550 90,570
 1602 6525468,980 656406,077 87,680
 1603 6525468,980 656410,545 88,080
 1604 6525474,441 656402,270 87,700
 1605 6525471,131 656401,442 87,590
 1606 6525477,751 656418,820 87,620
 1607 6525459,381 656407,732 88,380
 1608 6525456,898 656402,435 88,420
 1609 6525459,712 656394,160 88,270
 1610 6525461,532 656402,766 86,860
 1611 6525467,159 656384,892 88,730
 1612 6525466,001 656388,368 88,500
 1613 6525460,870 656390,188 88,760
 1614 6525479,903 656405,745 87,090
 1615 6525213,111 656671,545 92,431
 1616 6525214,269 656672,041 93,096

1617 6525215,759 656672,041 92,668
 1618 6525220,062 656672,372 93,059
 1619 6525220,558 656671,876 92,809
 1620 6525223,703 656671,876 92,576
 1621 6525229,992 656671,214 93,094
 1622 6525230,323 656670,883 93,322
 1623 6525235,454 656672,041 92,518
 1624 6525235,785 656673,034 93,379
 1625 6525235,619 656674,358 92,503
 1626 6525242,570 656677,172 92,213
 1627 6525243,067 656676,841 93,073
 1628 6525243,729 656676,345 93,026
 1629 6525244,060 656675,186 92,662
 1630 6525251,342 656677,172 92,473
 1631 6525251,839 656677,834 92,975
 1632 6525251,673 656678,662 92,762
 1633 6525251,508 656679,820 91,951
 1634 6525258,790 656680,648 92,004
 1635 6525259,452 656679,655 92,937
 1636 6525259,948 656679,324 92,910
 1637 6525260,114 656678,827 92,531
 1638 6525266,734 656678,331 92,000
 1639 6525267,396 656678,827 92,652
 1640 6525267,396 656679,655 92,091
 1641 6525273,520 656678,165 92,706
 1642 6525274,678 656677,834 92,450
 1643 6525274,844 656677,172 91,765
 1644 6525279,643 656676,510 91,558
 1645 6525279,643 656677,007 92,238
 1646 6525279,147 656677,669 91,891
 1647 6525285,270 656675,186 91,108
 1648 6525286,098 656675,683 91,856
 1649 6525286,429 656676,510 91,237
 1650 6525296,028 656673,696 90,516
 1651 6525296,690 656674,689 91,177
 1652 6525296,525 656675,021 90,924
 1653 6525303,310 656673,034 90,418
 1654 6525303,476 656673,365 91,067
 1655 6525303,310 656673,862 90,882
 1656 6525310,592 656672,207 90,271
 1657 6525310,923 656672,041 90,659
 1658 6525311,089 656672,869 90,225
 1659 6525317,047 656670,883 90,200
 1660 6525317,047 656671,214 90,458
 1661 6525317,213 656671,710 90,427
 1662 6525321,350 656670,055 90,284
 1663 6525321,847 656670,386 90,679
 1664 6525324,495 656670,386 90,714
 1665 6525326,481 656670,386 90,525
 1666 6525320,192 656667,407 90,100
 1667 6525314,234 656668,731 90,030
 1668 6525308,110 656669,890 90,010
 1669 6525300,993 656670,883 90,238
 1670 6525295,201 656672,207 90,399

1671 6525289,077 656672,538 90,712
 1672 6525281,464 656673,696 91,288
 1673 6525276,333 656674,358 91,487
 1674 6525268,885 656675,683 91,791
 1675 6525262,431 656676,014 91,978
 1676 6525256,804 656675,021 91,929
 1677 6525251,839 656673,531 91,898
 1678 6525251,673 656672,538 92,134
 1679 6525248,694 656668,897 91,764
 1680 6525246,211 656670,552 92,020
 1681 6525242,074 656669,890 92,179
 1682 6525241,908 656667,738 92,162
 1683 6525236,943 656668,566 92,218
 1684 6525249,687 656666,249 91,836
 1685 6525260,445 656674,524 92,130
 1686 6525265,741 656674,358 92,009
 1687 6525271,037 656673,696 91,780
 1688 6525277,988 656672,538 91,459
 1689 6525284,774 656671,379 91,150
 1690 6525291,559 656670,386 90,602
 1691 6525297,187 656669,890 90,369
 1692 6525304,303 656668,897 90,174
 1693 6525309,268 656667,904 89,973
 1694 6525314,068 656667,573 89,895
 1695 6525303,310 656666,911 88,892
 1696 6525308,606 656666,580 88,991
 1697 6525310,261 656665,918 89,197
 1698 6525295,035 656651,684 89,191
 1699 6525311,585 656660,622 89,207
 1700 6525310,261 656657,146 89,437
 1701 6525305,296 656656,319 89,662
 1702 6525306,124 656660,125 89,641
 1703 6525303,145 656662,608 89,371
 1704 6525301,655 656661,118 89,561
 1705 6525298,180 656659,132 89,186
 1706 6525295,366 656655,326 89,053
 1707 6525295,863 656661,449 89,107
 1708 6525289,242 656651,684 88,777
 1709 6525286,760 656651,022 88,128
 1710 6525284,608 656649,367 87,588
 1711 6525268,223 656647,050 82,000
 1712 6525271,865 656656,319 82,034
 1713 6525271,534 656659,132 82,310
 1714 6525268,058 656658,801 81,949
 1715 6525265,906 656656,650 81,516
 1716 6525266,072 656653,339 81,688
 1717 6525265,244 656649,533 81,470
 1718 6525261,272 656651,022 81,033
 1719 6525260,279 656655,657 81,220
 1720 6525262,265 656598,227 87,901
 1721 6525264,417 656594,089 87,916
 1722 6525267,561 656594,917 87,811
 1723 6525270,871 656589,951 87,679
 1724 6525268,720 656585,814 87,470

1725 6525266,899 656581,345 87,247
 1726 6525266,568 656577,704 87,181
 1727 6525267,230 656576,546 86,530
 1728 6525269,547 656580,187 87,382
 1729 6525270,375 656579,525 86,747
 1730 6525274,182 656583,331 87,431
 1731 6525275,506 656583,000 87,229
 1732 6525278,319 656585,317 87,641
 1733 6525279,147 656585,979 87,497
 1734 6525287,753 656588,296 87,071
 1735 6525292,884 656587,303 87,293
 1736 6525295,863 656587,965 87,014
 1737 6525278,319 656593,262 87,845
 1738 6525277,823 656598,061 88,171
 1739 6525280,471 656600,875 88,438
 1740 6525282,622 656602,861 88,252
 1741 6525281,960 656604,350 88,204
 1742 6525282,622 656613,122 87,920
 1743 6525274,513 656619,742 87,721
 1744 6525267,230 656598,723 87,904
 1745 6525273,685 656597,730 87,929
 1746 6525289,573 656611,301 87,700
 1747 6525293,711 656612,129 87,358
 1748 6525297,021 656612,460 87,389
 1749 6525299,835 656616,267 87,438
 1750 6525300,000 656612,625 88,076
 1751 6525291,228 656618,749 87,183
 1752 6525295,035 656613,784 87,353
 1753 6525292,387 656613,288 87,505
 1754 6525290,566 656613,784 87,639
 1755 6525303,972 656615,605 87,860
 1756 6525302,152 656618,418 87,338
 1757 6525291,228 656625,204 87,883
 1758 6525290,401 656623,218 87,889
 1759 6525294,208 656625,038 87,646
 1760 6525289,739 656621,728 88,034
 1761 6525286,760 656625,038 87,965
 1762 6525279,478 656624,045 87,653
 1763 6525283,615 656617,922 87,774
 1764 6525286,594 656615,108 87,631
 1765 6525276,002 656623,052 87,707
 1766 6525332,604 656640,761 89,716
 1767 6525333,598 656645,726 89,736
 1768 6525339,059 656655,988 90,136
 1769 6525341,707 656655,326 90,013
 1770 6525342,700 656655,160 90,316
 1771 6525342,866 656655,160 90,335
 1772 6525341,873 656651,519 90,075
 1773 6525339,059 656652,015 90,016
 1774 6525309,268 656603,854 89,841
 1775 6525308,772 656600,544 89,814
 1776 6525311,751 656598,227 88,968
 1777 6525314,896 656597,234 88,210
 1778 6525318,702 656597,068 87,988

1779 6525320,854 656597,565 88,106
 1780 6525321,847 656601,537 88,246
 1781 6525323,005 656606,005 88,790
 1782 6525321,847 656608,488 89,142
 1783 6525319,033 656608,984 89,235
 1784 6525316,385 656607,329 88,884
 1785 6525316,220 656607,164 88,873
 1786 6525316,385 656604,516 88,905
 1787 6525317,378 656602,861 88,668
 1788 6525316,385 656601,206 88,492
 1789 6525314,068 656602,364 89,019
 1790 6525312,413 656605,509 89,591
 1791 6525320,688 656610,970 88,161
 1792 6525325,488 656608,653 87,681
 1793 6525325,488 656604,516 87,646
 1794 6525324,164 656601,206 87,478
 1795 6525322,840 656597,399 87,098
 1796 6525321,019 656594,751 86,504
 1797 6525317,544 656593,924 86,199
 1798 6525312,910 656593,924 86,361
 1799 6525310,923 656594,917 87,183
 1800 6525312,910 656590,613 86,157
 1801 6525302,317 656590,944 86,611
 1802 6525314,896 656588,131 86,341
 1803 6525313,075 656582,338 86,200
 1804 6525311,585 656585,152 86,119
 1805 6525308,275 656586,476 86,271
 1806 6525312,910 656579,690 85,945
 1807 6525308,110 656576,877 86,036
 1808 6525305,131 656576,877 85,990
 1809 6525303,476 656582,338 86,667
 1810 6525316,716 656583,166 86,187
 1811 6525319,364 656581,345 86,234
 1812 6525323,336 656579,690 86,089
 1813 6525315,392 656576,049 86,224
 1814 6525312,578 656577,704 86,098
 1815 6525303,972 656573,401 85,913
 1816 6525304,469 656569,760 86,021
 1817 6525299,504 656567,112 85,738
 1818 6525297,187 656569,594 85,560
 1819 6525292,553 656568,270 85,372
 1820 6525293,215 656565,291 85,252
 1821 6525292,222 656561,154 85,281
 1822 6525302,152 656557,182 85,608
 1823 6525301,324 656553,872 85,702
 1824 6525307,117 656548,410 85,803
 1825 6525309,765 656549,403 85,770
 1826 6525315,227 656545,265 85,403
 1827 6525314,068 656542,452 85,425
 1828 6525317,047 656538,314 85,103
 1829 6525320,026 656538,811 84,903
 1830 6525323,336 656538,811 84,941
 1831 6525324,826 656530,536 84,569
 1832 6525321,516 656529,708 84,552

1833 6525319,364 656534,177 85,037
 1834 6525320,357 656547,582 85,294
 1835 6525323,005 656548,575 85,253
 1836 6525323,171 656556,354 85,581
 1837 6525320,192 656556,685 85,591
 1838 6525318,868 656563,967 85,682
 1839 6525322,012 656565,126 85,699
 1840 6525322,840 656572,077 85,855
 1841 6525320,026 656573,567 85,997
 1842 6525286,760 656566,119 85,365
 1843 6525287,587 656562,809 85,214
 1844 6525291,228 656560,988 85,321
 1845 6525283,781 656560,492 85,195
 1846 6525282,126 656564,133 85,255
 1847 6525274,347 656561,816 85,249
 1848 6525275,340 656557,844 85,211
 1849 6525266,568 656554,368 85,516
 1850 6525265,741 656556,851 85,567
 1851 6525265,741 656560,988 85,380
 1852 6525258,624 656563,802 86,298
 1853 6525255,811 656561,816 86,590
 1854 6525249,521 656568,601 87,524
 1855 6525251,342 656571,415 87,672
 1856 6525244,887 656579,690 88,205
 1857 6525241,743 656584,986 88,568
 1858 6525243,398 656587,965 88,442
 1859 6525220,393 656570,422 89,310
 1860 6525216,421 656570,422 89,640
 1861 6525213,442 656561,485 89,704
 1862 6525216,752 656560,161 89,381
 1863 6525220,227 656553,541 89,008
 1864 6525217,083 656550,396 89,362
 1865 6525223,868 656544,603 88,889
 1866 6525226,020 656547,748 88,675
 1867 6525235,785 656548,079 87,860
 1868 6525237,936 656544,934 87,857
 1869 6525246,542 656546,920 86,744
 1870 6525246,377 656550,561 86,728
 1871 6525253,990 656553,872 86,170
 1872 6525255,811 656550,893 85,996
 1873 6525260,610 656552,051 85,725
 1874 6525260,279 656555,196 85,739
 1875 6525254,156 656553,541 86,181
 1876 6525254,652 656556,354 86,214
 1877 6525245,218 656555,858 87,418
 1878 6525246,046 656560,823 87,423
 1879 6525243,398 656560,326 87,716
 1880 6525240,253 656559,499 87,868
 1881 6525235,454 656557,182 88,333
 1882 6525231,482 656555,361 88,366
 1883 6525227,178 656557,347 88,511
 1884 6525225,192 656560,988 88,526
 1885 6525224,530 656565,291 88,769
 1886 6525225,192 656569,760 88,856

1887 6525226,847 656573,732 88,860
 1888 6525231,978 656577,870 88,817
 1889 6525232,309 656570,753 88,600
 1890 6525228,006 656566,119 88,462
 1891 6525229,992 656563,305 88,248
 1892 6525233,468 656561,485 88,064
 1893 6525238,102 656561,816 87,938
 1894 6525241,577 656564,960 87,524
 1895 6525242,405 656568,436 87,710
 1896 6525242,405 656570,587 87,830
 1897 6525244,225 656573,236 87,932
 1898 6525243,729 656577,373 88,120
 1899 6525242,901 656581,345 88,402
 1900 6525239,591 656583,993 88,599
 1901 6525246,211 656585,979 88,389
 1902 6525247,535 656582,338 88,104
 1903 6525253,825 656572,408 87,378
 1904 6525257,631 656571,415 87,175
 1905 6525260,279 656573,236 87,598
 1906 6525262,265 656575,222 87,213
 1907 6525263,424 656574,891 87,331
 1908 6525263,920 656574,229 87,201
 1909 6525262,431 656572,077 87,219
 1910 6525263,755 656578,201 87,057
 1911 6525263,258 656584,490 87,485
 1912 6525261,934 656589,951 87,819
 1913 6525259,783 656594,255 87,762
 1914 6525245,880 656590,613 88,370
 1915 6525321,185 656530,039 84,695
 1916 6525324,329 656529,708 84,555
 1917 6525325,157 656517,295 83,413
 1918 6525321,847 656516,302 83,562
 1919 6525323,667 656503,062 82,012
 1920 6525326,812 656503,227 81,678
 1921 6525333,598 656490,980 80,606
 1922 6525331,280 656488,166 80,670
 1923 6525340,052 656478,567 80,308
 1924 6525342,866 656481,381 80,109
 1925 6525353,789 656476,747 79,998
 1926 6525352,796 656472,609 79,962
 1927 6525366,864 656468,637 79,822
 1928 6525368,022 656472,444 79,844
 1929 6525380,435 656470,292 79,710
 1930 6525381,263 656467,147 79,749
 1931 6525393,675 656466,485 79,588
 1932 6525394,999 656469,796 79,660
 1933 6525403,771 656471,451 79,399
 1934 6525405,261 656466,982 79,532
 1935 6525401,289 656475,919 79,474
 1936 6525403,109 656478,236 79,476
 1937 6525403,440 656487,504 79,179
 1938 6525400,627 656489,656 79,350
 1939 6525397,648 656496,607 79,177
 1940 6525400,461 656499,752 79,186

1941 6525397,813 656508,689 79,225
 1942 6525394,503 656508,854 79,270
 1943 6525390,696 656516,799 79,005
 1944 6525393,510 656518,950 78,881
 1945 6525393,510 656529,377 78,189
 1946 6525390,531 656530,701 78,207
 1947 6525393,841 656541,790 78,280
 1948 6525397,151 656541,790 78,330
 1949 6525400,792 656551,224 78,667
 1950 6525397,648 656553,541 78,707
 1951 6525396,655 656560,326 79,147
 1952 6525400,296 656562,974 79,315
 1953 6525399,634 656571,746 79,290
 1954 6525395,330 656574,229 79,409
 1955 6525392,682 656580,021 79,364
 1956 6525395,165 656584,159 79,401
 1957 6525399,468 656586,476 79,189
 1958 6525403,771 656583,000 79,106
 1959 6525406,585 656579,525 79,227
 1960 6525407,578 656575,718 79,052
 1961 6525409,398 656571,249 78,850
 1962 6525414,694 656570,918 78,769
 1963 6525417,177 656572,905 78,850
 1964 6525416,681 656577,208 78,839
 1965 6525421,315 656579,525 79,254
 1966 6525420,487 656581,345 79,244
 1967 6525422,804 656579,690 80,436
 1968 6525420,984 656582,669 80,839
 1969 6525417,508 656582,504 79,393
 1970 6525417,012 656583,993 80,844
 1971 6525410,888 656583,828 79,659
 1972 6525411,219 656585,317 80,753
 1973 6525412,377 656588,296 81,125
 1974 6525412,708 656588,296 81,153
 1975 6525416,846 656587,634 80,890
 1976 6525420,818 656585,814 81,311
 1977 6525422,473 656584,986 81,039
 1978 6525423,797 656586,476 81,395
 1979 6525420,156 656589,455 81,202
 1980 6525415,522 656590,944 80,975
 1981 6525410,888 656591,772 80,657
 1982 6525410,722 656589,951 80,751
 1983 6525410,722 656594,586 80,905
 1984 6525409,067 656594,586 81,292
 1985 6525409,067 656598,723 81,276
 1986 6525410,060 656599,882 81,649
 1987 6525408,902 656602,033 81,690
 1988 6525409,398 656602,861 81,662
 1989 6525408,571 656605,343 81,364
 1990 6525406,750 656606,005 80,458
 1991 6525406,585 656603,192 80,130
 1992 6525405,592 656599,054 79,740
 1993 6525405,757 656595,744 79,511
 1994 6525406,254 656592,600 79,451

1995 6525406,585 656588,958 79,455
 1996 6525407,909 656586,476 79,281
 1997 6525405,095 656607,329 80,448
 1998 6525404,268 656606,833 80,824
 1999 6525402,778 656611,467 80,120
 2000 6525401,951 656612,129 81,283
 2001 6525400,130 656616,267 80,062
 2002 6525399,468 656615,936 80,694
 2003 6525398,475 656620,239 80,489
 2004 6525397,648 656620,073 81,182
 2005 6525393,841 656620,570 80,728
 2006 6525393,344 656619,742 81,373
 2007 6525390,200 656620,239 80,619
 2008 6525389,703 656618,915 81,366
 2009 6525386,559 656620,901 80,940
 2010 6525386,228 656619,577 81,412
 2011 6525385,897 656618,418 81,563
 2012 6525383,249 656615,108 80,816
 2013 6525383,249 656614,943 81,406
 2014 6525380,766 656612,625 80,215
 2015 6525380,104 656611,963 80,793
 2016 6525377,456 656622,225 85,983
 2017 6525376,794 656625,866 88,298
 2018 6525375,139 656628,514 89,699
 2019 6525373,649 656632,320 92,432
 2020 6525375,636 656635,465 90,331
 2021 6525378,118 656640,596 89,434
 2022 6525383,414 656646,057 88,568
 2023 6525391,524 656648,374 87,998
 2024 6525397,979 656645,892 87,594
 2025 6525402,778 656641,754 87,510
 2026 6525398,144 656637,451 86,258
 2027 6525393,675 656637,782 85,608
 2028 6525390,200 656639,106 85,542
 2029 6525386,228 656640,761 85,912
 2030 6525386,062 656633,976 84,490
 2031 6525391,027 656633,645 84,515
 2032 6525398,806 656634,141 85,817
 2033 6525405,426 656636,789 87,451
 2034 6525406,916 656632,320 87,388
 2035 6525407,578 656629,010 87,949
 2036 6525407,578 656625,369 88,502
 2037 6525407,247 656623,383 88,421
 2038 6525409,895 656620,570 89,345
 2039 6525412,708 656617,591 89,465
 2040 6525416,681 656609,150 89,923
 2041 6525418,170 656607,329 89,878
 2042 6525421,315 656604,847 87,942
 2043 6525403,937 656600,709 79,673
 2044 6525402,944 656601,040 80,443
 2045 6525398,641 656594,586 79,558
 2046 6525398,144 656595,579 80,172
 2047 6525393,510 656594,751 79,470
 2048 6525392,848 656595,248 80,169

2049 6525389,538 656587,965 79,448
 2050 6525388,214 656588,131 80,394
 2051 6525386,559 656578,863 80,014
 2052 6525385,897 656579,359 80,494
 2053 6525379,111 656576,711 80,503
 2054 6525378,615 656577,870 81,164
 2055 6525373,980 656580,021 80,979
 2056 6525374,146 656580,683 81,370
 2057 6525370,505 656587,138 80,846
 2058 6525370,836 656587,634 81,159
 2059 6525371,498 656592,434 80,280
 2060 6525371,829 656592,434 80,929
 2061 6525369,346 656600,378 80,028
 2062 6525370,008 656600,709 80,788
 2063 6525366,698 656607,164 79,776
 2064 6525367,691 656607,660 80,638
 2065 6525369,512 656611,798 79,938
 2066 6525370,174 656611,301 80,545
 2067 6525375,139 656614,943 80,094
 2068 6525375,305 656614,281 80,650
 2069 6525374,642 656607,826 80,162
 2070 6525376,132 656603,523 80,343
 2071 6525379,111 656601,702 80,392
 2072 6525384,242 656602,199 80,305
 2073 6525388,379 656604,350 80,383
 2074 6525390,862 656607,164 80,514
 2075 6525395,165 656605,178 80,604
 2076 6525391,524 656602,033 80,373
 2077 6525386,559 656598,227 80,076
 2078 6525383,745 656596,075 80,774
 2079 6525380,601 656591,275 81,002
 2080 6525378,946 656585,483 80,973
 2081 6525380,932 656581,676 80,886
 2082 6525271,580 656605,880 88,120
 2083 6525276,060 656607,060 88,045
 2084 6525283,850 656607,600 88,009
 2085 6525292,930 656607,970 87,648
 2086 6525300,110 656599,470 87,267
 2087 6525299,550 656604,500 87,467
 2088 6525300,670 656607,580 87,586
 2089 6525302,750 656609,580 87,619
 2090 6525304,430 656612,800 87,660
 2091 6525306,590 656614,870 87,429
 2092 6525308,310 656614,520 87,335
 2093 6525309,970 656614,150 86,430
 2094 6525309,030 656618,360 86,858
 2095 6525311,810 656612,280 86,365
 2096 6525313,840 656611,620 86,545
 2097 6525318,190 656613,500 86,656
 2098 6525322,090 656616,570 86,764
 2099 6525325,140 656620,530 87,011
 2100 6525327,330 656625,950 87,256
 2101 6525327,960 656632,130 87,043
 2102 6525328,810 656637,000 87,263

2103 6525329,490 656642,630 87,325
 2104 6525329,930 656645,910 87,360
 2105 6525328,000 656647,550 87,375
 2106 6525331,240 656647,700 88,519
 2107 6525331,440 656649,060 88,412
 2108 6525329,720 656648,550 88,257
 2109 6525329,450 656648,000 88,126
 2110 6525327,340 656647,800 86,878
 2111 6525325,750 656648,130 87,168
 2112 6525323,390 656647,090 87,425
 2113 6525322,820 656644,980 87,618
 2114 6525324,070 656644,980 87,126
 2115 6525322,230 656641,360 87,797
 2116 6525323,750 656641,670 87,043
 2117 6525322,190 656638,320 87,960
 2118 6525323,630 656638,450 87,178
 2119 6525322,220 656636,850 87,787
 2120 6525323,250 656636,130 87,210
 2121 6525321,640 656635,670 87,338
 2122 6525319,530 656634,180 87,404
 2123 6525318,640 656633,170 87,885
 2124 6525318,630 656632,580 87,850
 2125 6525320,730 656631,350 87,860
 2126 6525321,040 656631,780 87,798
 2127 6525321,960 656632,640 87,239
 2128 6525321,430 656630,060 87,758
 2129 6525321,990 656630,050 87,661
 2130 6525322,910 656629,960 87,228
 2131 6525321,250 656628,830 87,728
 2132 6525321,790 656628,570 87,698
 2133 6525322,670 656627,970 87,302
 2134 6525321,110 656627,190 86,969
 2135 6525319,940 656628,010 87,002
 2136 6525325,210 656628,480 87,189
 2137 6525325,920 656634,930 87,086
 2138 6525326,330 656641,350 87,151
 2139 6525327,190 656644,800 87,241
 2140 6525324,050 656625,700 87,134
 2141 6525320,400 656620,600 87,038
 2142 6525315,610 656616,350 86,750
 2143 6525312,700 656621,130 86,938
 2144 6525317,560 656623,950 87,011
 2145 6525319,140 656628,850 86,626
 2146 6525318,220 656630,340 86,566
 2147 6525316,120 656631,470 86,437
 2148 6525315,130 656633,410 85,933
 2149 6525315,840 656635,040 85,916
 2150 6525317,930 656636,320 85,987
 2151 6525314,540 656637,070 85,687
 2152 6525311,490 656638,200 85,348
 2153 6525307,670 656638,280 85,364
 2154 6525310,650 656635,660 85,777
 2155 6525311,020 656632,580 85,952
 2156 6525310,640 656629,350 86,000

2157 6525309,380 656626,880 86,336
 2158 6525312,790 656628,220 86,349
 2159 6525314,640 656629,680 86,442
 2160 6525316,550 656626,310 86,745
 2161 6525312,950 656625,440 86,854
 2162 6525312,960 656625,430 86,912
 2163 6525316,520 656625,770 86,843
 2164 6525315,760 656626,790 86,205
 2165 6525310,450 656624,820 87,060
 2166 6525307,790 656623,090 87,075
 2167 6525304,740 656621,630 87,060
 2168 6525300,930 656622,340 87,165
 2169 6525298,830 656624,000 87,203
 2170 6525297,990 656629,710 86,408
 2171 6525302,230 656627,870 85,598
 2172 6525304,570 656626,560 85,455
 2173 6525307,510 656628,380 85,030
 2174 6525308,860 656629,560 85,034
 2175 6525309,040 656632,940 85,174
 2176 6525309,650 656635,690 85,491
 2177 6525307,460 656637,590 85,481
 2178 6525305,430 656634,920 85,206
 2179 6525306,280 656631,670 85,197
 2180 6525302,340 656631,250 85,655
 2181 6525301,680 656633,850 85,580
 2182 6525298,110 656634,480 85,880
 2183 6525295,250 656635,710 85,784
 2184 6525297,840 656636,160 86,873
 2185 6525300,030 656636,050 87,203
 2186 6525302,150 656636,590 87,739
 2187 6525303,620 656637,540 87,611
 2188 6525303,840 656639,430 87,570
 2189 6525302,440 656640,690 87,603
 2190 6525301,360 656638,750 87,477
 2191 6525300,880 656640,840 87,385
 2192 6525298,510 656640,490 86,998
 2193 6525298,860 656638,270 86,989
 2194 6525297,160 656639,530 86,426
 2195 6525296,730 656637,470 86,638
 2196 6525294,220 656637,360 85,173
 2197 6525293,420 656639,760 84,100
 2198 6525294,800 656642,640 83,708
 2199 6525294,320 656643,560 83,687
 2200 6525298,050 656644,440 84,193
 2201 6525298,080 656645,250 84,345
 2202 6525301,550 656645,470 84,530
 2203 6525301,560 656646,290 84,582
 2204 6525305,730 656645,090 84,109
 2205 6525305,880 656645,710 84,175
 2206 6525308,390 656643,770 83,227
 2207 6525308,830 656644,570 83,338
 2208 6525309,210 656642,120 83,305
 2209 6525312,020 656641,250 83,570
 2210 6525314,480 656640,630 83,851

2211 6525316,350 656639,440 84,250
 2212 6525317,100 656640,210 84,246
 2213 6525316,060 656641,860 83,685
 2214 6525316,730 656644,280 83,708
 2215 6525313,010 656643,360 83,254
 2216 6525310,880 656644,640 83,374
 2217 6525313,220 656646,080 83,626
 2218 6525316,570 656647,870 83,769
 2219 6525317,390 656646,630 83,795
 2220 6525319,490 656649,660 84,027
 2221 6525318,930 656649,890 84,209
 2222 6525320,970 656653,410 83,721
 2223 6525321,890 656652,610 83,749
 2224 6525324,090 656653,790 83,502
 2225 6525325,820 656653,410 83,831
 2226 6525326,940 656654,050 83,960
 2227 6525325,380 656656,450 83,767
 2228 6525327,960 656657,070 84,056
 2229 6525328,960 656660,520 84,744
 2230 6525327,760 656660,900 84,711
 2231 6525325,400 656659,220 83,859
 2232 6525323,210 656657,200 83,665
 2233 6525321,910 656654,980 83,893
 2234 6525293,480 656643,440 83,789
 2235 6525290,590 656642,920 83,900
 2236 6525290,590 656641,650 83,896
 2237 6525287,880 656643,270 83,854
 2238 6525288,630 656643,970 83,885
 2239 6525286,680 656645,120 83,953
 2240 6525286,280 656644,080 84,036
 2241 6525283,970 656643,320 84,833
 2242 6525282,080 656642,130 85,573
 2243 6525284,380 656641,930 85,378
 2244 6525284,140 656639,650 85,527
 2245 6525284,640 656640,680 85,384
 2246 6525285,420 656641,470 85,711
 2247 6525284,280 656638,200 86,185
 2248 6525286,380 656637,640 85,631
 2249 6525286,690 656639,490 84,838
 2250 6525287,090 656640,780 85,352
 2251 6525289,550 656640,110 84,985
 2252 6525288,630 656638,970 84,648
 2253 6525287,990 656637,150 85,551
 2254 6525291,360 656640,200 84,217
 2255 6525290,220 656638,150 84,490
 2256 6525288,430 656636,340 85,072
 2257 6525288,230 656635,180 85,531
 2258 6525285,270 656634,380 85,515
 2259 6525284,730 656636,320 85,424
 2260 6525284,290 656637,560 86,095
 2261 6525282,970 656633,000 85,600
 2262 6525281,670 656634,980 85,567
 2263 6525280,720 656635,880 86,240
 2264 6525280,290 656634,120 85,612

2265	6525279,190	656635,840	85,442	2319	6525248,020	656608,980	88,626
2266	6525280,160	656637,710	85,423	2320	6525249,440	656609,440	87,918
2267	6525280,910	656640,290	85,411	2321	6525247,410	656607,410	88,040
2268	6525277,790	656637,500	85,468	2322	6525244,950	656606,960	87,938
2269	6525275,410	656635,720	85,443	2323	6525242,900	656607,640	87,872
2270	6525272,510	656635,330	85,725	2324	6525242,020	656610,090	88,047
2271	6525274,690	656632,410	85,760	2325	6525239,700	656610,230	87,878
2272	6525277,720	656631,330	85,933	2326	6525237,590	656608,880	87,786
2273	6525281,890	656631,330	85,774	2327	6525235,470	656607,850	87,925
2274	6525280,550	656628,660	86,047	2328	6525235,350	656606,330	88,072
2275	6525279,860	656626,470	86,466	2329	6525237,040	656603,390	88,305
2276	6525279,580	656625,310	86,618	2330	6525239,180	656600,670	88,407
2277	6525277,850	656625,860	86,498	2331	6525242,320	656599,560	88,278
2278	6525276,590	656624,900	87,014	2332	6525244,660	656598,870	88,100
2279	6525276,080	656626,070	87,742	2333	6525245,610	656597,890	88,100
2280	6525275,960	656627,040	87,872	2334	6525246,670	656598,610	88,002
2281	6525277,920	656627,210	86,365	2335	6525247,950	656599,620	87,797
2282	6525276,750	656629,750	85,946	2336	6525246,450	656600,760	87,932
2283	6525274,110	656629,440	86,156	2337	6525247,180	656602,920	88,040
2284	6525273,750	656626,690	86,472	2338	6525247,530	656604,730	87,948
2285	6525274,790	656624,730	86,854	2339	6525249,610	656605,830	87,833
2286	6525271,970	656622,930	87,014	2340	6525251,570	656607,470	87,468
2287	6525269,700	656620,940	87,257	2341	6525253,070	656606,980	87,228
2288	6525266,440	656618,030	86,982	2342	6525251,760	656604,180	86,689
2289	6525265,750	656614,850	86,904	2343	6525250,760	656604,440	86,537
2290	6525263,640	656611,600	86,812	2344	6525250,000	656602,440	86,330
2291	6525261,530	656608,560	87,338	2345	6525250,880	656601,970	86,477
2292	6525259,750	656607,740	87,355	2346	6525248,970	656601,460	86,682
2293	6525257,440	656607,730	86,982	2347	6525249,870	656600,480	86,806
2294	6525256,600	656606,210	86,993	2348	6525243,500	656602,480	88,296
2295	6525257,740	656604,540	87,368	2349	6525239,960	656604,310	88,059
2296	6525255,340	656607,690	86,700	2350	6525238,480	656606,640	87,891
2297	6525253,330	656608,780	86,357	2351	6525243,210	656606,030	87,924
2298	6525252,180	656610,880	85,972	2352	6525245,880	656605,440	87,972
2299	6525251,150	656614,750	85,603	2353	6525246,960	656621,870	85,689
2300	6525249,080	656617,550	85,387	2354	6525244,350	656619,400	85,704
2301	6525250,640	656619,800	85,245	2355	6525242,930	656619,860	85,785
2302	6525250,030	656622,170	85,319	2356	6525242,460	656615,720	86,019
2303	6525248,390	656623,310	85,458	2357	6525242,110	656616,920	86,047
2304	6525248,220	656621,580	86,244	2358	6525241,340	656612,430	86,135
2305	6525248,960	656621,010	86,088	2359	6525240,140	656614,460	86,015
2306	6525248,020	656619,100	86,548	2360	6525237,710	656611,810	86,129
2307	6525247,440	656619,750	86,419	2361	6525237,400	656613,810	85,865
2308	6525246,230	656616,580	86,930	2362	6525234,640	656611,070	85,832
2309	6525245,580	656616,940	86,941	2363	6525232,080	656609,630	86,018
2310	6525246,550	656613,150	88,937	2364	6525231,580	656607,610	86,754
2311	6525245,480	656613,070	88,822	2365	6525232,860	656605,270	86,731
2312	6525244,900	656611,390	89,184	2366	6525235,270	656602,160	86,636
2313	6525246,900	656611,790	88,934	2367	6525237,320	656599,250	86,609
2314	6525247,600	656610,200	88,674	2368	6525239,890	656597,430	86,383
2315	6525245,600	656610,060	88,964	2369	6525242,480	656597,450	86,706
2316	6525244,020	656610,000	88,905	2370	6525243,620	656597,730	86,846
2317	6525244,740	656608,640	88,930	2371	6525243,710	656596,720	86,888
2318	6525246,420	656608,260	88,964	2372	6525241,300	656595,680	86,737

2373 6525238,970 656593,560 86,816
 2374 6525235,450 656591,260 87,195
 2375 6525231,110 656590,750 87,077
 2376 6525227,410 656589,870 87,217
 2377 6525224,180 656587,830 87,550
 2378 6525221,290 656587,580 87,523
 2379 6525219,320 656589,240 87,377
 2380 6525216,830 656589,510 87,845
 2381 6525214,790 656589,750 87,981
 2382 6525213,620 656589,600 88,078
 2383 6525214,050 656591,600 87,866
 2384 6525216,160 656591,770 87,793
 2385 6525217,770 656594,420 87,588
 2386 6525219,190 656597,320 87,498
 2387 6525220,900 656599,800 87,425
 2388 6525222,010 656601,940 87,433
 2389 6525222,320 656604,210 87,357
 2390 6525220,540 656603,050 88,054
 2391 6525220,160 656600,670 88,018
 2392 6525218,400 656599,000 88,343
 2393 6525216,500 656596,170 88,496
 2394 6525215,010 656594,220 88,853
 2395 6525212,960 656595,030 89,053
 2396 6525214,570 656597,220 89,211
 2397 6525216,000 656599,940 88,862
 2398 6525217,220 656601,590 88,766
 2399 6525217,460 656603,130 88,626
 2400 6525224,380 656600,610 87,206
 2401 6525222,250 656596,650 87,354
 2402 6525219,790 656593,010 87,165
 2403 6525223,260 656591,860 86,918
 2404 6525225,530 656593,670 87,087
 2405 6525229,590 656594,730 87,148
 2406 6525233,060 656596,560 86,651
 2407 6525237,260 656596,430 86,448
 2408 6525233,080 656599,270 86,704
 2409 6525229,410 656600,780 86,881
 2410 6525228,440 656604,370 86,565
 2411 6525225,590 656605,700 86,872
 2412 6525222,780 656604,930 86,849
 2413 6525220,660 656605,080 86,585
 2414 6525218,790 656606,170 86,459
 2415 6525217,680 656607,310 86,648
 2416 6525217,300 656610,230 86,721
 2417 6525218,130 656612,940 86,999
 2418 6525218,570 656614,630 86,972
 2419 6525217,760 656615,600 87,801
 2420 6525220,230 656616,340 87,164
 2421 6525220,660 656615,600 86,699
 2422 6525221,400 656613,390 86,525
 2423 6525222,330 656612,560 86,060
 2424 6525219,750 656609,730 86,415
 2425 6525224,450 656610,580 86,443
 2426 6525227,700 656610,530 86,224

2427 6525230,040 656612,790 85,816
 2428 6525234,490 656613,610 85,502
 2429 6525230,710 656613,680 85,897
 2430 6525231,340 656616,640 86,203
 2431 6525227,120 656616,570 86,320
 2432 6525226,820 656614,440 85,989
 2433 6525224,810 656616,510 86,266
 2434 6525224,830 656615,000 85,925
 2435 6525223,380 656617,760 85,887
 2436 6525219,790 656618,510 85,815
 2437 6525218,010 656620,100 85,706
 2438 6525218,000 656623,900 85,407
 2439 6525220,880 656623,010 85,254
 2440 6525221,210 656626,260 85,116
 2441 6525216,590 656625,910 86,004
 2442 6525217,790 656630,210 85,787
 2443 6525222,100 656629,480 85,113
 2444 6525218,750 656633,870 85,814
 2445 6525218,160 656636,910 87,017
 2446 6525218,070 656638,870 87,344
 2447 6525218,260 656640,980 86,538
 2448 6525219,210 656639,250 87,615
 2449 6525221,200 656640,380 87,465
 2450 6525222,220 656639,700 87,540
 2451 6525222,240 656638,510 87,499
 2452 6525221,060 656638,910 87,870
 2453 6525219,660 656637,940 87,696
 2454 6525220,530 656636,790 87,285
 2455 6525222,000 656633,900 85,171
 2456 6525224,310 656634,750 85,404
 2457 6525223,340 656631,110 85,176
 2458 6525223,000 656627,640 85,046
 2459 6525224,870 656635,430 85,382
 2460 6525225,490 656638,560 85,502
 2461 6525224,970 656641,120 85,471
 2462 6525228,890 656637,240 85,236
 2463 6525233,600 656633,350 85,250
 2464 6525233,640 656633,300 85,426
 2465 6525235,030 656629,970 84,505
 2466 6525233,740 656631,030 85,346
 2467 6525234,000 656628,950 84,625
 2468 6525232,290 656629,540 85,531
 2469 6525230,330 656630,170 85,630
 2470 6525227,470 656630,750 85,397
 2471 6525226,540 656627,170 85,546
 2472 6525223,780 656623,060 85,674
 2473 6525228,360 656621,920 85,972
 2474 6525229,320 656625,220 85,829
 2475 6525232,160 656620,310 85,866
 2476 6525232,690 656623,310 85,929
 2477 6525233,770 656625,870 85,820
 2478 6525234,360 656627,360 84,958
 2479 6525235,460 656625,480 85,585
 2480 6525235,560 656627,990 84,703

2481	6525237,080	656627,590	85,517	2535	6525258,710	656612,230	86,497
2482	6525238,250	656625,700	85,628	2536	6525259,900	656615,320	86,355
2483	6525239,150	656625,130	85,713	2537	6525261,340	656618,270	85,861
2484	6525238,290	656623,480	85,960	2538	6525263,630	656620,040	86,225
2485	6525236,020	656622,230	85,813	2539	6525264,380	656623,180	86,373
2486	6525234,910	656618,420	85,937	2540	6525267,270	656626,350	86,038
2487	6525235,820	656615,480	86,353	2541	6525269,950	656630,480	85,823
2488	6525237,780	656615,530	87,117	2542	6525266,260	656635,680	85,723
2489	6525238,280	656615,460	87,098	2543	6525263,280	656631,040	85,718
2490	6525237,540	656618,240	87,235	2544	6525260,240	656626,600	85,921
2491	6525237,890	656618,150	87,264	2545	6525255,220	656628,980	85,556
2492	6525239,040	656617,760	86,695	2546	6525258,150	656633,450	85,562
2493	6525239,070	656615,470	86,682	2547	6525261,510	656638,490	85,931
2494	6525240,600	656616,160	86,635	2548	6525256,340	656639,990	85,720
2495	6525240,840	656617,550	86,552	2549	6525254,450	656635,960	85,641
2496	6525241,150	656619,880	86,318	2550	6525251,940	656630,860	85,443
2497	6525239,130	656620,290	86,949	2551	6525247,280	656633,170	85,500
2498	6525241,480	656622,530	86,384	2552	6525249,620	656638,700	85,434
2499	6525239,860	656622,650	86,728	2553	6525244,550	656639,640	85,331
2500	6525238,020	656620,670	86,962	2554	6525244,090	656635,140	85,565
2501	6525241,590	656620,510	86,176	2555	6525245,900	656632,290	85,606
2502	6525242,880	656623,420	85,936	2556	6525242,380	656633,150	85,532
2503	6525241,390	656624,130	86,566	2557	6525238,790	656634,690	85,143
2504	6525240,530	656624,610	86,508	2558	6525240,390	656638,810	85,047
2505	6525240,830	656626,790	86,985	2559	6525242,470	656642,310	85,190
2506	6525241,580	656627,070	87,057	2560	6525242,040	656646,520	85,049
2507	6525240,630	656628,540	87,182	2561	6525239,400	656650,900	84,832
2508	6525240,160	656627,950	87,200	2562	6525238,000	656648,180	85,263
2509	6525239,360	656629,040	86,808	2563	6525239,720	656645,780	85,325
2510	6525239,250	656628,510	86,792	2564	6525240,300	656643,420	85,231
2511	6525237,220	656630,590	85,395	2565	6525239,130	656641,560	85,011
2512	6525235,870	656629,850	84,657	2566	6525236,590	656640,660	85,029
2513	6525239,530	656631,920	85,375	2567	6525234,510	656641,020	85,422
2514	6525242,340	656631,180	85,662	2568	6525235,210	656637,120	85,298
2515	6525243,170	656628,670	85,981	2569	6525229,670	656640,380	85,127
2516	6525244,470	656628,310	86,138	2570	6525232,660	656642,090	85,164
2517	6525245,540	656627,610	86,846	2571	6525232,010	656644,910	85,133
2518	6525243,380	656626,140	85,972	2572	6525232,950	656647,060	85,573
2519	6525244,040	656626,090	86,031	2573	6525235,600	656648,230	85,567
2520	6525245,240	656626,050	86,832	2574	6525235,940	656645,900	86,858
2521	6525243,440	656625,260	85,617	2575	6525236,880	656644,780	87,020
2522	6525245,390	656624,220	85,614	2576	6525235,750	656643,920	86,986
2523	6525247,470	656624,820	85,365	2577	6525235,250	656644,930	86,937
2524	6525245,570	656625,930	86,799	2578	6525235,500	656649,470	85,698
2525	6525248,270	656626,910	85,617	2579	6525235,910	656650,910	85,002
2526	6525246,490	656627,470	86,926	2580	6525232,980	656650,360	85,949
2527	6525247,430	656629,240	85,662	2581	6525233,800	656651,750	85,232
2528	6525245,670	656629,690	85,930	2582	6525231,330	656651,930	85,604
2529	6525251,270	656626,600	85,439	2583	6525232,720	656649,530	86,112
2530	6525256,800	656622,900	85,717	2584	6525233,300	656648,530	85,648
2531	6525253,570	656620,230	85,275	2585	6525230,370	656647,770	86,116
2532	6525259,150	656619,360	85,690	2586	6525231,070	656646,270	85,365
2533	6525255,610	656614,820	85,975	2587	6525227,600	656645,850	85,918
2534	6525257,090	656611,120	86,497	2588	6525227,760	656644,620	85,142

2589 6525224,450 656645,730 85,454
 2590 6525226,660 656643,200 85,122
 2591 6525222,850 656642,700 85,540
 2592 6525219,360 656641,830 86,071
 2593 6525219,480 656645,950 85,958
 2594 6525219,290 656649,090 85,983
 2595 6525219,040 656651,790 86,352
 2596 6525219,540 656655,490 85,866
 2597 6525219,440 656655,470 85,757
 2598 6525221,980 656653,080 85,579
 2599 6525223,260 656651,200 85,368
 2600 6525225,540 656653,400 85,471
 2601 6525228,340 656651,310 85,737
 2602 6525226,570 656655,810 85,292
 2603 6525223,930 656656,250 85,118
 2604 6525220,950 656658,380 84,890
 2605 6525222,800 656661,110 84,713
 2606 6525226,040 656661,180 84,757
 2607 6525226,170 656658,030 84,777
 2608 6525229,400 656657,130 84,998
 2609 6525229,380 656660,610 85,311
 2610 6525232,950 656659,940 85,428
 2611 6525232,230 656656,680 85,214
 2612 6525232,510 656654,350 85,005
 2613 6525235,250 656653,240 84,859
 2614 6525236,270 656655,930 85,200
 2615 6525240,390 656654,700 85,300
 2616 6525239,730 656652,050 84,821
 2617 6525242,700 656650,050 85,199
 2618 6525242,200 656653,890 85,142
 2619 6525245,050 656653,820 85,549
 2620 6525247,280 656653,420 85,660
 2621 6525246,950 656658,340 87,259
 2622 6525248,480 656658,030 86,825
 2623 6525249,120 656656,810 86,633
 2624 6525247,480 656655,480 86,828
 2625 6525244,960 656656,120 86,888
 2626 6525244,300 656658,280 86,998
 2627 6525242,570 656657,660 87,060
 2628 6525242,420 656656,950 86,909
 2629 6525239,440 656657,560 86,982
 2630 6525239,920 656658,200 87,102
 2631 6525237,670 656658,740 86,782
 2632 6525238,310 656659,540 87,048
 2633 6525235,110 656661,230 87,013
 2634 6525240,800 656660,440 88,468
 2635 6525239,570 656662,140 88,841
 2636 6525238,720 656663,510 89,486
 2637 6525241,700 656662,770 88,865
 2638 6525243,290 656661,800 88,714
 2639 6525243,430 656660,110 88,248
 2640 6525249,240 656652,640 84,346
 2641 6525250,510 656653,080 84,264
 2642 6525251,490 656652,920 84,193

2643 6525249,800 656651,570 84,151
 2644 6525251,160 656650,890 83,843
 2645 6525250,520 656648,990 83,871
 2646 6525251,900 656649,840 83,775
 2647 6525252,370 656648,220 83,561
 2648 6525250,790 656646,820 83,542
 2649 6525249,770 656647,360 83,604
 2650 6525249,650 656645,470 83,600
 2651 6525249,040 656645,810 83,698
 2652 6525255,930 656650,510 81,869
 2653 6525256,280 656649,170 81,776
 2654 6525259,550 656648,320 81,453
 2655 6525263,420 656648,320 81,460
 2656 6525267,470 656646,890 82,292
 2657 6525269,130 656646,550 82,429
 2658 6525269,130 656644,870 83,137
 2659 6525267,760 656644,310 83,309
 2660 6525269,680 656650,220 81,682
 2661 6525272,710 656653,800 81,988
 2662 6525276,920 656656,600 82,483
 2663 6525276,900 656659,360 82,467
 2664 6525282,010 656660,480 83,313
 2665 6525282,430 656659,210 83,315
 2666 6525287,910 656661,630 84,947
 2667 6525287,590 656662,190 85,001
 2668 6525293,090 656664,910 86,601
 2669 6525293,210 656664,350 86,572
 2670 6525297,420 656666,670 88,076
 2671 6525297,420 656666,030 88,057
 2672 6525273,590 656659,680 82,537
 2673 6525273,500 656657,440 82,306
 2674 6525269,850 656655,950 82,078
 2675 6525269,360 656657,720 82,110
 2676 6525269,710 656659,870 82,408
 2677 6525264,440 656659,500 82,028
 2678 6525265,060 656656,170 81,659
 2679 6525265,920 656652,280 81,770
 2680 6525261,150 656650,960 81,339
 2681 6525261,250 656654,010 81,589
 2682 6525260,620 656657,270 81,875
 2683 6525257,950 656656,020 82,049
 2684 6525258,750 656652,750 81,593
 2685 6525255,500 656654,360 82,282
 2686 6525255,740 656652,240 81,907
 2687 6525247,510 656652,120 85,405
 2688 6525247,880 656650,040 85,484
 2689 6525246,760 656646,990 85,556
 2690 6525246,770 656646,990 85,496
 2691 6525246,470 656644,800 85,214
 2692 6525247,860 656643,090 85,438
 2693 6525250,790 656643,330 85,156
 2694 6525252,790 656644,710 85,277
 2695 6525256,400 656642,980 85,462
 2696 6525259,090 656641,120 85,640

2697 6525262,520 656641,790 85,674
 2698 6525265,360 656641,620 85,927
 2699 6525267,780 656640,180 85,571
 2700 6525269,960 656639,720 85,835
 2701 6525269,690 656637,570 85,985
 2702 6525271,560 656636,040 86,045
 2703 6525273,240 656637,810 87,115
 2704 6525272,810 656638,340 87,265
 2705 6525275,260 656641,250 88,054
 2706 6525275,780 656640,870 88,154
 2707 6525278,160 656642,500 88,159
 2708 6525276,820 656643,880 88,195
 2709 6525278,420 656647,810 88,219
 2710 6525279,990 656645,960 88,341
 2711 6525283,320 656648,980 88,486
 2712 6525282,410 656650,990 88,452
 2713 6525286,100 656652,570 88,527
 2714 6525286,610 656651,140 88,448
 2715 6525286,730 656649,890 88,133
 2716 6525290,500 656650,160 88,938
 2717 6525289,820 656652,180 88,747
 2718 6525289,530 656654,030 89,134
 2719 6525291,810 656656,180 88,567
 2720 6525291,010 656657,240 88,335
 2721 6525293,880 656654,460 88,883
 2722 6525294,310 656652,470 89,123
 2723 6525294,090 656650,660 88,967
 2724 6525292,120 656650,360 89,091
 2725 6525298,580 656651,370 89,164
 2726 6525297,450 656654,110 89,166
 2727 6525296,250 656656,600 89,081
 2728 6525294,050 656659,960 88,783
 2729 6525296,410 656662,930 88,741
 2730 6525299,270 656659,140 89,167
 2731 6525301,220 656655,510 89,491
 2732 6525302,220 656651,660 89,373
 2733 6525307,890 656651,960 89,654
 2734 6525305,670 656657,310 89,619
 2735 6525302,370 656661,780 89,229
 2736 6525298,760 656664,950 89,015
 2737 6525299,050 656666,700 88,507
 2738 6525305,450 656666,900 89,004
 2739 6525306,210 656661,570 89,531
 2740 6525306,680 656656,810 89,568
 2741 6525307,110 656651,630 89,407
 2742 6525312,030 656653,540 89,304
 2743 6525315,050 656653,880 88,885
 2744 6525314,980 656657,260 88,917
 2745 6525310,120 656658,120 89,508
 2746 6525310,150 656662,110 89,341
 2747 6525311,360 656666,000 89,096
 2748 6525314,140 656664,790 88,352
 2749 6525314,000 656662,900 88,888
 2750 6525315,520 656661,060 88,819

2751 6525315,890 656659,110 88,721
 2752 6525318,060 656660,850 88,104
 2753 6525318,090 656662,110 87,997
 2754 6525318,420 656663,490 87,945
 2755 6525321,040 656662,920 88,036
 2756 6525320,040 656662,020 87,992
 2757 6525322,610 656664,300 88,681
 2758 6525323,330 656663,540 88,697
 2759 6525325,530 656665,090 89,171
 2760 6525324,500 656667,200 90,221
 2761 6525324,550 656667,190 90,181
 2762 6525324,570 656669,570 90,383
 2763 6525326,900 656670,230 90,607
 2764 6525329,240 656670,170 90,376
 2765 6525329,620 656668,770 90,085
 2766 6525329,090 656667,650 90,042
 2767 6525328,000 656668,500 91,115
 2768 6525327,770 656668,940 91,111
 2769 6525326,090 656668,090 91,295
 2770 6525326,160 656668,840 91,413
 2771 6525321,760 656666,550 89,932
 2772 6525316,770 656666,980 89,913
 2773 6525313,070 656667,560 89,947
 2774 6525309,460 656668,090 89,971
 2775 6525305,370 656668,710 89,971
 2776 6525300,330 656669,260 90,067
 2777 6525294,410 656670,170 90,176
 2778 6525287,020 656671,090 90,758
 2779 6525281,800 656671,880 91,114
 2780 6525275,510 656672,520 90,941
 2781 6525270,430 656673,720 91,196
 2782 6525263,470 656674,350 91,756
 2783 6525263,500 656674,330 91,687
 2784 6525259,410 656674,410 91,844
 2785 6525256,870 656672,710 92,201
 2786 6525255,130 656671,190 92,220
 2787 6525253,270 656669,150 91,953
 2788 6525250,340 656667,130 91,855
 2789 6525247,900 656665,010 92,332
 2790 6525247,080 656664,720 92,197
 2791 6525242,570 656667,110 92,226
 2792 6525238,140 656668,310 92,255
 2793 6525234,730 656669,540 92,310
 2794 6525232,040 656669,890 92,444
 2795 6525229,950 656670,360 93,178
 2796 6525227,250 656670,070 93,112
 2797 6525223,450 656671,350 92,641
 2798 6525220,350 656670,960 92,665
 2799 6525216,620 656669,060 92,672
 2800 6525211,940 656665,460 93,066
 2801 6525209,890 656660,880 93,814
 2802 6525209,500 656657,830 94,399
 2803 6525209,370 656655,970 94,581
 2804 6525209,120 656650,200 94,500

2805	6525208,440	656645,730	94,607	2859	6525222,690	656582,420	88,603
2806	6525207,830	656643,020	94,797	2860	6525221,100	656585,350	88,560
2807	6525207,830	656639,940	94,971	2861	6525225,370	656585,800	88,676
2808	6525208,040	656637,720	95,034	2862	6525229,260	656586,440	88,472
2809	6525207,260	656633,280	95,188	2863	6525233,630	656587,580	88,495
2810	6525207,270	656633,250	95,139	2864	6525237,080	656588,280	88,518
2811	6525206,460	656630,770	95,384	2865	6525240,280	656589,350	88,328
2812	6525204,010	656628,520	96,128	2866	6525244,360	656591,830	88,321
2813	6525204,330	656624,630	95,586	2867	6525246,160	656594,580	88,163
2814	6525205,330	656622,270	95,034	2868	6525247,960	656593,960	88,528
2815	6525207,560	656620,490	94,283	2869	6525247,950	656595,120	88,962
2816	6525209,210	656618,070	93,519	2870	6525249,330	656596,170	88,899
2817	6525209,230	656618,070	93,451	2871	6525250,360	656595,510	88,410
2818	6525210,460	656615,760	92,785	2872	6525249,930	656597,350	88,941
2819	6525210,430	656615,830	92,811	2873	6525250,790	656598,180	88,342
2820	6525211,630	656613,140	92,144	2874	6525248,810	656597,290	89,030
2821	6525211,090	656611,110	92,212	2875	6525249,070	656598,610	88,258
2822	6525210,870	656608,920	92,495	2876	6525247,210	656598,420	88,140
2823	6525211,000	656606,810	92,579	2877	6525247,530	656597,320	88,888
2824	6525211,710	656605,450	91,567	2878	6525246,950	656596,470	88,958
2825	6525213,720	656602,970	90,895	2879	6525245,830	656596,790	88,247
2826	6525212,930	656599,020	90,680	2880	6525252,670	656600,120	88,212
2827	6525211,130	656596,470	90,728	2881	6525254,170	656601,660	88,289
2828	6525209,330	656593,230	90,498	2882	6525253,390	656603,230	88,246
2829	6525210,120	656589,130	90,368	2883	6525254,710	656603,950	88,853
2830	6525210,680	656585,620	90,458	2884	6525254,570	656605,640	88,357
2831	6525211,720	656586,480	89,451	2885	6525253,350	656605,800	87,836
2832	6525211,940	656584,780	90,228	2886	6525254,640	656606,250	87,959
2833	6525213,730	656584,970	89,965	2887	6525255,970	656604,350	88,095
2834	6525213,250	656586,080	89,260	2888	6525255,240	656603,490	88,444
2835	6525212,280	656587,850	89,031	2889	6525257,180	656603,490	88,250
2836	6525214,480	656587,280	89,260	2890	6525258,820	656603,890	88,114
2837	6525214,210	656584,010	90,035	2891	6525259,410	656604,540	88,148
2838	6525214,880	656583,500	89,985	2892	6525258,550	656605,920	88,255
2839	6525214,860	656585,010	90,292	2893	6525258,970	656606,440	88,206
2840	6525215,480	656584,840	90,192	2894	6525260,890	656606,440	88,170
2841	6525215,500	656585,930	90,058	2895	6525263,420	656608,510	88,134
2842	6525216,170	656585,510	90,061	2896	6525265,660	656610,780	88,067
2843	6525218,200	656585,260	89,121	2897	6525267,380	656613,670	88,014
2844	6525217,140	656583,870	88,966	2898	6525268,240	656616,850	87,974
2845	6525215,740	656583,410	89,409	2899	6525270,260	656618,860	88,055
2846	6525215,070	656583,560	89,965	2900	6525272,200	656621,170	87,921
2847	6525216,900	656580,510	88,856	2901	6525274,620	656622,080	87,954
2848	6525214,940	656580,100	89,886	2902	6525276,090	656623,510	87,869
2849	6525217,570	656578,060	88,830	2903	6525277,860	656623,440	87,767
2850	6525216,670	656576,950	89,373	2904	6525279,770	656623,430	87,904
2851	6525219,170	656575,740	88,816	2905	6525283,110	656626,590	87,680
2852	6525217,590	656574,790	89,718	2906	6525284,730	656629,270	87,779
2853	6525219,770	656572,830	89,121	2907	6525286,770	656631,430	87,504
2854	6525218,380	656572,370	89,575	2908	6525288,960	656632,240	87,213
2855	6525220,050	656571,400	89,348	2909	6525290,300	656634,240	86,758
2856	6525223,050	656572,490	88,927	2910	6525291,310	656633,850	86,819
2857	6525222,570	656575,040	88,675	2911	6525291,830	656632,220	86,858
2858	6525222,490	656579,140	88,573	2912	6525292,930	656634,560	85,751

2913 6525293,190 656631,390 86,106
 2914 6525293,880 656629,650 86,115
 2915 6525291,510 656631,540 86,875
 2916 6525291,260 656629,290 87,557
 2917 6525292,350 656627,410 87,347
 2918 6525294,570 656627,350 87,083
 2919 6525293,240 656623,360 87,491
 2920 6525295,980 656621,260 87,373
 2921 6525298,190 656618,380 87,584
 2922 6525301,500 656615,170 87,686
 2923 6525303,790 656618,290 87,347
 2924 6525306,790 656612,260 89,292
 2925 6525307,620 656611,960 89,314
 2926 6525308,000 656609,810 89,035
 2927 6525305,870 656609,480 89,082
 2928 6525307,860 656608,030 89,016
 2929 6525309,100 656608,360 90,059
 2930 6525306,910 656605,190 89,081
 2931 6525308,200 656604,880 90,124
 2932 6525304,620 656605,560 89,091
 2933 6525303,720 656602,230 89,390
 2934 6525306,060 656602,070 89,091
 2935 6525307,310 656601,170 89,988
 2936 6525305,440 656598,650 89,527
 2937 6525303,730 656600,060 89,500
 2938 6525303,200 656601,440 89,400
 2939 6525301,080 656598,050 87,219
 2940 6525303,790 656595,850 87,009
 2941 6525307,400 656593,640 86,575
 2942 6525302,000 656589,840 86,719
 2943 6525296,590 656592,610 87,040
 2944 6525294,720 656599,170 87,416
 2945 6525294,970 656606,370 87,543
 2946 6525297,210 656610,740 87,550
 2947 6525292,830 656616,030 87,712
 2948 6525289,100 656622,770 87,685
 2949 6525287,140 656626,810 87,777
 2950 6525285,960 656619,990 87,770
 2951 6525280,570 656617,480 87,913
 2952 6525274,940 656613,310 88,029
 2953 6525269,680 656607,560 88,147
 2954 6525264,910 656602,760 88,207
 2955 6525257,780 656597,100 88,124
 2956 6525251,050 656590,740 88,325
 2957 6525244,980 656585,460 88,376
 2958 6525238,660 656584,100 88,459
 2959 6525240,100 656581,120 88,454
 2960 6525235,670 656577,450 88,592
 2961 6525233,280 656582,030 88,537
 2962 6525228,010 656580,990 88,563
 2963 6525230,440 656577,030 88,611
 2964 6525232,270 656573,010 88,714
 2965 6525227,720 656569,360 88,899
 2966 6525224,680 656573,370 88,831

2967 6525222,740 656577,650 88,632
 2968 6525225,560 656566,940 88,880
 2969 6525220,080 656561,380 89,284
 2970 6525221,960 656555,110 88,960
 2971 6525224,060 656549,420 88,920
 2972 6525233,100 656552,470 88,561
 2973 6525228,240 656558,010 88,713
 2974 6525226,090 656561,810 88,809
 2975 6525231,840 656566,850 88,561
 2976 6525233,790 656562,430 88,158
 2977 6525235,770 656557,230 88,560
 2978 6525241,320 656558,120 88,195
 2979 6525238,710 656564,310 87,968
 2980 6525236,340 656570,390 88,410
 2981 6525243,380 656575,310 88,310
 2982 6525246,970 656568,250 87,673
 2983 6525250,260 656562,770 87,119
 2984 6525257,130 656565,430 86,746
 2985 6525254,770 656571,070 87,484
 2986 6525251,610 656575,920 87,938
 2987 6525249,880 656580,340 88,155
 2988 6525257,390 656585,450 87,965
 2989 6525259,610 656580,360 87,641
 2990 6525261,320 656575,860 87,259
 2991 6525266,420 656582,590 87,484
 2992 6525264,080 656588,280 87,799
 2993 6525262,380 656592,610 87,976
 2994 6525269,540 656597,910 88,017
 2995 6525271,330 656593,110 87,934
 2996 6525274,000 656586,700 87,525
 2997 6525282,400 656588,240 87,318
 2998 6525279,040 656595,580 87,802
 2999 6525276,510 656602,870 87,986
 3000 6525272,660 656603,900 88,114
 3001 6525278,260 656604,600 88,024
 3002 6525279,670 656606,980 88,024
 3003 6525285,910 656608,540 87,990
 3004 6525289,370 656607,780 87,836
 3005 6525289,590 656602,450 87,687
 3006 6525290,140 656596,260 87,422
 3007 6525286,010 656594,530 87,483
 3008 6525285,850 656588,340 87,184
 3009 6525281,340 656576,630 86,063
 3010 6525275,960 656573,690 85,828
 3011 6525271,700 656570,940 85,589
 3012 6525272,070 656565,610 85,313
 3013 6525278,720 656569,250 85,442
 3014 6525285,420 656571,050 85,394
 3015 6525290,810 656571,760 85,583
 3016 6525291,390 656573,120 86,194
 3017 6525291,860 656573,670 85,625
 3018 6525294,260 656574,800 85,702
 3019 6525295,040 656574,090 86,236
 3020 6525295,680 656573,460 85,809

3021 6525295,880 656575,440 86,014
 3022 6525294,790 656575,520 86,033
 3023 6525294,520 656577,360 85,953
 3024 6525292,320 656577,120 84,689
 3025 6525292,620 656575,120 84,784
 3026 6525291,380 656575,250 84,748
 3027 6525291,440 656576,900 84,703
 3028 6525294,590 656577,850 86,371
 3029 6525292,360 656578,980 86,327
 3030 6525290,360 656577,970 85,981
 3031 6525289,310 656576,930 86,071
 3032 6525287,940 656576,890 86,126
 3033 6525288,780 656575,490 86,624
 3034 6525287,110 656575,390 85,843
 3035 6525289,560 656575,560 85,934
 3036 6525290,370 656574,370 85,845
 3037 6525289,570 656573,830 86,469
 3038 6525288,990 656572,410 85,537
 3039 6525301,280 656577,550 85,932
 3040 6525296,830 656583,290 86,365
 3041 6525291,480 656585,600 86,795
 3042 6525294,260 656590,250 87,048
 3043 6525301,910 656587,060 86,559
 3044 6525308,950 656585,190 86,274
 3045 6525319,730 656611,260 88,413
 3046 6525321,880 656613,670 88,222
 3047 6525324,530 656615,470 88,386
 3048 6525325,770 656614,520 88,281
 3049 6525326,030 656616,340 89,021
 3050 6525326,510 656615,770 89,029
 3051 6525327,740 656614,930 88,313
 3052 6525326,210 656617,590 88,691
 3053 6525328,670 656619,500 88,843
 3054 6525329,400 656618,750 89,545
 3055 6525329,650 656618,500 89,463
 3056 6525330,740 656618,050 88,895
 3057 6525332,330 656622,560 89,327
 3058 6525331,400 656622,830 89,661
 3059 6525331,170 656622,990 89,724
 3060 6525330,360 656623,270 89,130
 3061 6525331,260 656627,430 89,571
 3062 6525332,110 656627,390 90,154
 3063 6525332,480 656627,170 90,077
 3064 6525333,530 656626,790 89,576
 3065 6525334,250 656631,040 89,803
 3066 6525333,200 656631,100 90,310
 3067 6525332,760 656631,130 90,296
 3068 6525331,980 656631,050 89,757
 3069 6525332,400 656634,980 90,098
 3070 6525333,420 656634,720 90,632
 3071 6525333,820 656634,750 90,537
 3072 6525334,760 656634,750 89,991
 3073 6525334,720 656638,280 89,988
 3074 6525333,650 656638,160 90,561

3075 6525333,390 656638,160 90,518
 3076 6525332,210 656637,990 89,984
 3077 6525333,050 656639,440 89,811
 3078 6525333,930 656639,310 89,937
 3079 6525331,890 656640,240 89,694
 3080 6525333,080 656643,920 89,636
 3081 6525334,050 656647,920 90,136
 3082 6525335,420 656648,200 90,182
 3083 6525335,080 656649,170 90,670
 3084 6525334,180 656649,680 90,224
 3085 6525336,880 656650,990 90,216
 3086 6525335,950 656651,720 90,943
 3087 6525335,450 656651,890 90,747
 3088 6525334,510 656652,090 90,360
 3089 6525335,470 656655,310 90,409
 3090 6525336,640 656654,920 90,899
 3091 6525337,120 656654,700 90,772
 3092 6525338,070 656654,790 90,410
 3093 6525337,740 656656,660 90,371
 3094 6525336,950 656656,860 90,343
 3095 6525336,130 656655,700 90,656
 3096 6525337,180 656659,530 90,046
 3097 6525337,720 656660,940 90,123
 3098 6525337,130 656660,910 90,408
 3099 6525336,620 656660,830 89,989
 3100 6525337,380 656663,960 90,160
 3101 6525336,470 656663,910 90,561
 3102 6525336,100 656663,720 90,584
 3103 6525335,420 656663,350 90,146
 3104 6525335,510 656666,580 90,245
 3105 6525334,700 656666,410 90,599
 3106 6525334,330 656666,210 90,510
 3107 6525333,700 656665,730 89,973
 3108 6525333,310 656667,520 90,110
 3109 6525334,320 656667,590 90,536
 3110 6525334,820 656667,510 90,521
 3111 6525335,540 656668,100 90,087
 3112 6525334,360 656668,820 90,132
 3113 6525333,500 656668,370 90,115
 3114 6525333,030 656666,170 89,838
 3115 6525331,010 656667,200 89,944
 3116 6525329,480 656667,670 89,945
 3117 6525420,860 656466,580 79,429
 3118 6525425,030 656462,950 79,420
 3119 6525430,110 656458,400 79,390
 3120 6525432,600 656454,840 79,392
 3121 6525431,450 656453,120 79,380
 3122 6525425,570 656457,930 79,499
 3123 6525421,760 656460,350 79,490
 3124 6525432,450 656451,940 79,381
 3125 6525434,640 656449,560 79,615
 3126 6525437,210 656448,160 79,468
 3127 6525437,620 656450,170 79,421
 3128 6525437,090 656451,320 79,454

3129 6525435,260 656451,600 79,579
 3130 6525434,480 656453,970 79,580
 3131 6525435,760 656456,350 79,471
 3132 6525437,340 656457,980 79,553
 3133 6525438,950 656459,500 79,602
 3134 6525439,830 656462,650 79,660
 3135 6525441,660 656463,830 79,735
 3136 6525443,850 656464,930 79,756
 3137 6525443,600 656466,900 79,833
 3138 6525443,170 656468,890 79,762
 3139 6525443,680 656470,940 79,704
 3140 6525442,440 656471,390 79,613
 3141 6525442,210 656471,740 79,373
 3142 6525440,570 656469,410 79,963
 3143 6525439,500 656470,340 79,445
 3144 6525438,820 656467,670 79,818
 3145 6525437,900 656468,100 79,339
 3146 6525439,250 656465,430 79,899
 3147 6525438,360 656464,750 79,538
 3148 6525439,210 656463,980 79,584
 3149 6525445,080 656472,270 79,282
 3150 6525446,860 656474,810 79,037
 3151 6525449,480 656477,130 78,834
 3152 6525454,000 656478,920 79,030
 3153 6525463,360 656479,970 79,114
 3154 6525465,490 656478,460 79,246
 3155 6525466,420 656477,750 79,327
 3156 6525469,610 656477,670 79,218
 3157 6525472,260 656477,000 78,946
 3158 6525475,490 656477,410 78,651
 3159 6525479,720 656474,410 78,575
 3160 6525483,590 656471,700 78,657
 3161 6525489,090 656467,000 78,526
 3162 6525492,480 656464,640 78,211
 3163 6525492,100 656463,550 77,341
 3164 6525496,290 656461,110 78,272
 3165 6525486,050 656466,650 77,390
 3166 6525482,290 656470,100 77,285
 3167 6525477,940 656473,200 77,211
 3168 6525475,350 656475,550 77,431
 3169 6525473,570 656475,500 77,383
 3170 6525471,780 656475,000 77,467
 3171 6525469,070 656474,860 77,411
 3172 6525466,530 656475,040 77,328
 3173 6525464,700 656473,920 77,431
 3174 6525463,090 656473,260 77,395
 3175 6525462,570 656473,940 77,340
 3176 6525463,490 656474,250 77,766
 3177 6525463,330 656475,940 77,394
 3178 6525464,580 656475,510 78,378
 3179 6525464,980 656476,990 78,487
 3180 6525462,960 656477,530 77,363
 3181 6525459,970 656478,090 77,305
 3182 6525457,390 656477,010 77,385

3183 6525454,580 656476,340 77,346
 3184 6525452,750 656476,740 77,518
 3185 6525450,240 656475,220 77,551
 3186 6525448,280 656473,970 77,868
 3187 6525446,730 656471,210 78,277
 3188 6525446,410 656468,460 78,584
 3189 6525447,210 656466,300 78,394
 3190 6525448,470 656465,760 77,794
 3191 6525449,030 656468,130 78,157
 3192 6525450,570 656467,590 77,535
 3193 6525451,090 656470,170 77,773
 3194 6525452,100 656469,350 77,341
 3195 6525455,210 656469,580 77,737
 3196 6525454,490 656469,110 77,239
 3197 6525455,950 656468,560 77,936
 3198 6525455,170 656468,010 77,337
 3199 6525456,290 656467,980 77,901
 3200 6525456,820 656468,060 77,852
 3201 6525455,700 656467,130 77,307
 3202 6525457,390 656467,440 77,309
 3203 6525457,980 656468,610 77,313
 3204 6525457,020 656469,210 78,148
 3205 6525456,400 656469,750 78,056
 3206 6525457,210 656470,580 77,936
 3207 6525457,670 656469,860 77,831
 3208 6525458,590 656470,000 77,284
 3209 6525457,810 656471,230 77,360
 3210 6525456,370 656471,340 77,368
 3211 6525454,810 656470,110 77,329
 3212 6525458,160 656473,590 77,043
 3213 6525454,010 656473,400 77,457
 3214 6525451,490 656471,770 77,583
 3215 6525448,720 656470,880 78,242
 3216 6525447,150 656468,310 78,457
 3217 6525446,390 656463,780 78,102
 3218 6525447,530 656462,700 77,754
 3219 6525443,980 656461,860 78,544
 3220 6525445,780 656458,140 78,293
 3221 6525441,430 656460,650 78,478
 3222 6525440,590 656458,310 78,482
 3223 6525439,220 656455,560 78,152
 3224 6525437,020 656454,800 78,302
 3225 6525436,040 656453,150 78,509
 3226 6525437,950 656452,590 78,574
 3227 6525439,320 656451,120 78,322
 3228 6525439,610 656449,420 78,122
 3229 6525439,400 656448,090 78,178
 3230 6525442,180 656447,210 77,985
 3231 6525445,070 656446,670 78,012
 3232 6525446,910 656445,800 77,680
 3233 6525447,260 656447,470 77,607
 3234 6525445,820 656448,100 78,206
 3235 6525444,050 656449,140 78,097
 3236 6525447,710 656450,030 78,620

3237 6525449,060 656449,020 77,602
 3238 6525449,750 656452,240 78,522
 3239 6525451,600 656451,210 77,244
 3240 6525451,010 656454,410 78,364
 3241 6525453,130 656453,840 77,429
 3242 6525452,030 656456,780 77,326
 3243 6525450,360 656455,990 78,391
 3244 6525449,070 656457,460 78,241
 3245 6525450,030 656458,610 77,457
 3246 6525446,600 656458,600 77,973
 3247 6525449,220 656461,650 77,465
 3248 6525452,940 656461,460 77,375
 3249 6525454,450 656462,250 76,387
 3250 6525453,990 656459,590 76,840
 3251 6525453,530 656460,740 77,367
 3252 6525453,530 656460,730 77,366
 3253 6525445,890 656457,100 78,329
 3254 6525445,320 656453,840 78,730
 3255 6525444,290 656453,910 78,326
 3256 6525444,730 656451,370 78,628
 3257 6525443,410 656450,090 78,085
 3258 6525445,340 656449,720 78,733
 3259 6525444,130 656448,690 78,068
 3260 6525446,980 656453,050 78,875
 3261 6525446,720 656452,680 78,774
 3262 6525447,330 656444,230 77,679
 3263 6525448,310 656442,310 78,077
 3264 6525449,850 656442,450 78,063
 3265 6525450,790 656444,670 77,680
 3266 6525452,990 656445,990 77,344
 3267 6525455,420 656445,770 77,304
 3268 6525458,020 656445,920 77,418
 3269 6525457,710 656444,620 77,759
 3270 6525458,970 656445,520 77,621
 3271 6525459,420 656446,630 77,294
 3272 6525461,820 656446,570 77,352
 3273 6525463,790 656446,000 77,400
 3274 6525464,280 656444,940 77,537
 3275 6525463,050 656444,380 78,364
 3276 6525462,130 656444,000 78,712
 3277 6525461,040 656443,980 78,507
 3278 6525461,480 656442,950 78,197
 3279 6525463,090 656443,150 77,880
 3280 6525463,960 656443,880 77,668
 3281 6525463,160 656441,580 78,152
 3282 6525466,990 656440,530 77,834
 3283 6525471,500 656441,690 77,758
 3284 6525474,920 656443,980 77,559
 3285 6525477,870 656445,780 77,318
 3286 6525473,270 656445,640 77,300
 3287 6525467,180 656447,460 77,282
 3288 6525473,650 656449,150 77,124
 3289 6525480,820 656447,280 77,250
 3290 6525484,670 656447,220 77,306

3291 6525486,760 656447,350 77,337
 3292 6525490,640 656449,240 77,579
 3293 6525495,370 656450,250 78,036
 3294 6525495,890 656449,390 78,685
 3295 6525495,910 656449,390 78,621
 3296 6525498,820 656450,910 78,626
 3297 6525492,140 656447,420 78,677
 3298 6525489,040 656446,120 78,713
 3299 6525485,840 656443,970 79,177
 3300 6525489,440 656441,120 78,849
 3301 6525494,890 656438,380 78,500
 3302 6525492,620 656443,520 78,542